

KEY

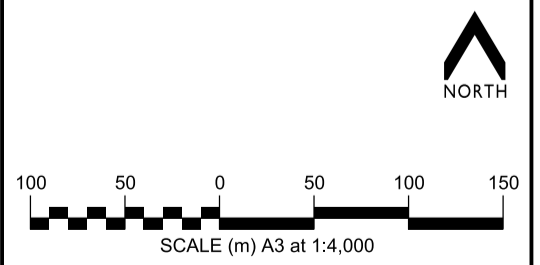
- Outline development plan boundary
- Existing transmission lines
- 50 dBA noise contour
- Area to be quarried
- Development requirements**
- Existing open space / stormwater and utility reserve
- Land to be set aside for stormwater and utility reserve

Development requirements cont.

- Road access point Fixed location
- Road access point Location may vary
- Collector road Indicative alignment
- Pedestrian / cycle link / route Location may vary
- Reserve Indicative location Size to be determined at time of subdivision

Residential development area

- Residential development area
- Residential development area with greater development constraints



Technical Services and Design
Assets and Network Unit
Christchurch City Council

Map: pp102501.dgn
Date: 11/09/2015

Appendix 8.6.5
New Neighbourhood
South Masham
Outline Development Plan