

## **LYTTELTON/MT HERBERT COMMUNITY BOARD AGENDA**

**THURSDAY 13 DECEMBER 2012  
AT 1.30PM**

**IN THE BOARDROOM, LYTTELTON SERVICE CENTRE,  
15 LONDON STREET, LYTTELTON**

**Community Board:** Paula Smith (Chairperson), Jeremy Agar (Deputy Chairperson), Ann Jolliffe, Claudia Reid, Adrian Te Patu and Andrew Turner

**Community Board Adviser**

Liz Carter

Telephone: 941 5682

Fax: (03) 304-7731

Email: [liz.carter@ccc.govt.nz](mailto:liz.carter@ccc.govt.nz)

**PART A - MATTERS REQUIRING A COUNCIL DECISION**

**PART B - REPORTS FOR INFORMATION**

**PART C - DELEGATED DECISIONS**

<b>INDEX</b>	<b>PAGE NO</b>
<b>KARAKIA</b>	
<b>PART C 1. APOLOGIES</b>	<b>4</b>
<b>PART C 2. CONFIRMATION OF MEETING MINUTES – 15 NOVEMBER 2012</b>	<b>4</b>
<b>PART B 3. DEPUTATIONS BY APPOINTMENT</b>	<b>9</b>
3.1 Nat Halliday – Lyttelton Skatepark	
<b>PART B 4. CORRESPONDENCE</b>	<b>9</b>
4.1 Elizabeth Graham	
<b>PART B 5. PETITIONS</b>	<b>16</b>
<b>PART B 6. NOTICES OF MOTION</b>	<b>16</b>
<b>PART B 7. RESERVE MANAGEMENT COMMITTEES</b>	<b>16</b>
7.1 Lyttelton Reserves Management Committee	
<b>PART C 8. GOVERNORS BAY – JETTY ROAD, CRESSWELL AVENUE AND MAIN ROAD PARKING RESTRICTIONS</b>	<b>19</b>
<b>PART C 9. APPLICATION TO LYTTELTON/MT HERBERT YOUTH DEVELOPMENT SCHEME – MILLICENT ST. CLARE SMITH</b>	<b>25</b>

<b>PART C</b>	<b>10.</b>	<b>APPLICATION TO LYTTTELTON/MT HERBERT COMMUNITY BOARD 2012/13 DISCRETIONARY RESPONSE FUND</b>	<b>28</b>
<b>PART B</b>	<b>11.</b>	<b>BRIEFINGS</b>	<b>31</b>
<b>PART B</b>	<b>12.</b>	<b>COMMUNITY BOARD ADVISER'S UPDATE</b>	<b>31</b>
	12.1	Board Funding Balances	
	12.2	October Update on Local Capital Projects and SCIRT Update	
	12.3	Banks Peninsula Water Management Zone Committee – 16 October 2012	
	12.4	Local Earthquake Recovery Co-ordination	
	12.5	Lyttelton Civic Square Competition	
<b>PART B</b>	<b>13.</b>	<b>ELECTED MEMBERS' INFORMATION EXCHANGE</b>	<b>46</b>
<b>PART B</b>	<b>14.</b>	<b>QUESTIONS UNDER STANDING ORDERS</b>	<b>46</b>

## **Lyttelton/Mt Herbert Community Board Objectives for the 2010 – 2013 Triennium**

These objectives are agreed by members of the Lyttelton/Mt Herbert Community Board. They are intended to guide decision-making and provide a basis for the Board's advocacy work in this triennium and beyond. These objectives can only be achieved in partnership with others, including our many resourceful community groups, mana whenua, local businesses (including Lyttelton Port of Christchurch), the Christchurch City Council and government agencies.

- **Local community partnership in earthquake recovery**
- **Port traffic off waterfront quays**
- **Improved public access to inner harbour waterfront**
- **A rebuilt sustainable Lyttelton town centre, with character**
- **Lyttelton Urban Design Advisory Committee up and running**
- **Retention, restoration, and timely recovery of local heritage**
- **Arts and creative activities supported and celebrated**
- **Lyttelton Harbour catchment water quality steadily improving**
- **Head-to-Head walkway up and running**
- **Predator-free Port Hills**
- **Landscapes protected and sustainably managed**
- **Stoddart Point and Coastal Cliff Management Plan finalised**
- **Agreed plans for Godley House site redevelopment**
- **Destination Lyttelton Harbour “on the map” for visitors**
- **More and different people involved (broader community engagement)**
- **Greater community interest in role of the Community Board**

Lyttelton/Mt Herbert Community Board  
Adopted 15 May 2012

**13. 12. 2012**

**1. APOLOGIES**

**2. CONFIRMATION OF MEETING MINUTES – 15 NOVEMBER 2012**

The minutes of the Board's meeting of 15 November 2012 are **attached**.

**STAFF RECOMMENDATION**

That the minutes of the Board's meeting held on Thursday 15 November 2012 be confirmed.

**LYTTELTON/MT HERBERT COMMUNITY BOARD  
15 NOVEMBER 2012**

**Minutes of a meeting of the Lyttelton/Mt Herbert Community Board  
held on Thursday 15 November 2012 at 1.30pm in the  
Boardroom, Lyttelton Service Centre, 15 London Street, Lyttelton**

**PRESENT:** Paula Smith (Chairperson), Jeremy Agar, Ann Jolliffe, Claudia Reid,  
Adrian Te Patu and Andrew Turner.

**APOLOGY:** Nil.

**KARAKIA:** Adrian Te Patu gave the opening karakia.

A warm welcome and best wishes were extended to Councillor Claudia Reid on her return from sick leave.

The Board reports that:

**PART B - REPORTS FOR INFORMATION**

**1. DEPUTATIONS BY APPOINTMENT**

**1.1 CENSUS 2013 – NIKKI HAWKEY, COMMUNITY ENGAGEMENT MANAGER**

Nikki Hawkey, Community Engagement Manager briefed the Board on the 2013 Census and what it will mean to local communities.

**1.2 JAMES ENSOR AND ROGER ALLEN – NAVAL POINT BREAKWATER**

James Ensor addressed the Board regarding the Seaflex breakwater proposal for Naval Point expressing concern at the ongoing delay to get a suitable and safe all weather, all tides boat launching/retrieval and mooring facility at Lyttelton for recreational boats.

A public meeting has been organised for Monday 26 November 2012 at Naval Point Club to discuss the matter and Council staff have advised they will be attending.

**1.3 JAN TITUS – TIMEBALL STATION**

Jan Titus, Manager of the Timeball Station for the Historic Places Trust addressed the Board regarding a proposal to erect a part of the new Timeball station. It is proposed to commence consultation from December 2012 to gauge opinion and feedback on whether the community will support the proposal. A large amount of money has been pledged solely for this project providing there is support in the community.

**2. CORRESPONDENCE**

Nil.

**3. PETITIONS**

Nil.

**4. NOTICES OF MOTION**

Nil.

**5. BRIEFINGS**

Nil.

**6. COMMUNITY BOARD ADVISER'S UPDATE**

The Board **received** information from the Community Board Adviser on various matters.

The meeting adjourned at 2.50pm and resumed at 3.05pm.

**7. ELECTED MEMBERS' INFORMATION EXCHANGE**

Specific mention was made of the following matters:

- Information was received regarding the Saturday morning Lyttelton Farmers' Market moving to a new location on London Street from 17 November 2012. Part of London Street would be temporarily closed each Saturday for the market to take place there.
- The Board **decided** to request regular briefings at its formal meetings from staff working on the implementation of the Lyttelton Master Plan.

**8. QUESTIONS UNDER STANDING ORDERS**

Nil.

**PART C - REPORT ON DELEGATED DECISIONS**

**9. CONFIRMATION OF MEETING MINUTES**

The Board **resolved** that the minutes of its meeting held on 18 October 2012 be confirmed.

**10. APPLICATION TO LYTTELTON/MT HERBERT COMMUNITY BOARD 2012/13 DISCRETIONARY RESPONSE FUND**

The Board considered a report seeking consideration of two funding requests for the Governors Bay Pottery Group for the purchase of a kiln and the Otamahua/Quail Island Ecological Restoration Trust for transport costs for volunteers.

**10 Cont'd**

The Board **resolved** to:

- (a) Approve a grant of \$3,210 from its 2012/13 Discretionary Response Fund to Governors Bay Pottery Group for the purchase of a pottery kiln.
- (b) Approve a grant of \$4,000 from its 2012/13 Discretionary Response Fund to Otamahua/Quail Island Ecological Restoration Trust towards transport costs for volunteers.

**11. APPLICATION TO LYTTTELTON/MT HERBERT COMMUNITY BOARD 2012/13 DISCRETIONARY RESPONSE FUND – LYTTTELTON RESERVES MANAGEMENT COMMITTEE**

The Board considered a report seeking funding for the Lyttelton Reserves Management Committee for a memorial.

The Board **resolved** to approve a grant of \$1,500 from its 2012/13 Discretionary Response Fund to the Lyttelton Reserves Management Committee for the Gary Broker Memorial towards purchase and installation of a seat and a plaque.

**12. APPLICATION TO LYTTTELTON/MT HERBERT COMMUNITY BOARD 2012/13 DISCRETIONARY RESPONSE FUND – LYTTTELTON VOLUNTEER FIRE BRIGADE**

The Board considered a report seeking funding for the Lyttelton Volunteer Fire Brigade for a book launch event

The Board resolved to approve a grant of \$1,500 from its 2012/13 Discretionary Response Fund to the Lyttelton Volunteer Fire Brigade towards Lyttelton Volunteer Fire Brigade's book launch event and requested that a copy of the book be obtained for display in the Board's meeting room.

**13. LYTTTELTON/MT HERBERT COMMUNITY BOARD 2012/13 RECESS COMMITTEE**

The Board **resolved**:

- (a) That a Lyttelton/Mt Herbert Community Board Recess Committee comprising a minimum of three members including either the Board Chairperson or Deputy Chairperson, be authorised to exercise the delegated powers of the Lyttelton/Mt Herbert Community Board for the period following its ordinary meeting on 13 December 2012 up until the Board resumes normal business in February 2013.
- (b) That the application of any such delegation be reported back to the Board for record purposes.

**14. LYTTTELTON/MT HERBERT COMMUNITY BOARD 2013 MEETING DATES**

The Board resolved to adopt a schedule of ordinary meeting dates up to September 2013 to be held at 1.30pm in the Board Room, Lyttelton Service Centre, 15 London Street, Lyttelton as follows:

Thursday 21 February 2013  
 Thursday 21 March 2013  
 Thursday 18 April 2013  
 Thursday 23 May 2013  
 Thursday 20 June 2013  
 Thursday 18 July 2013  
 Thursday 22 August 2013  
 Thursday 19 September 2013

**15. COMMUNITY BOARD ADVISERS UPDATE - CONTINUED**

**15.1 DRAFT WASTEWATER STRATEGY 2012 - SUBMISSION**

The Board **resolved** to adopt its submission to the Draft Wastewater Strategy 2012.

The meeting closed at 3.47pm.

**CONFIRMED THIS 13TH DAY OF DECEMBER 2012.**

**PAULA SMITH  
CHAIRPERSON**



**3. DEPUTATIONS BY APPOINTMENT**

**3.1 NAT HALLIDAY – LYTTTELTON SKATEPARK**

Mr Halliday wishes to speak to the Board about the possibility of upgrading and/or repairing the Lyttelton Skatepark.

**4. CORRESPONDENCE**

**4.1 ELIZABETH GRAHAM**

**Attached** is a letter from Elizabeth Graham requesting the Board consult with the Lyttelton community regarding having free Wi Fi installed in London Street.

**STAFF RECOMMENDATION**

That the Board receive the correspondence.

Elizabeth Graham  
72 Butterfield Ave (ratepayer for 9 Te Ra Crescent, Diamond Hbr)  
Linwood  
CHRISTCHURCH 8062  
Ph 389-4682

15 November 2012

Lyttelton/Mt Herbert Community Board  
c/- Lyttelton Service Centre  
LYTTELTON

Dear Board Members

**Electromagnetic Radiation: Proposed WiFi in London St, Lyttelton**

---

According to *Lyttelton Review* of 15 October, Lyttelton Harbour Information Centre has received funding from Internet NZ for WiFi in London Street (Canterbury-Oxford Streets) free for 3 years.

Concerns have been expressed in the article and to me about:

- .1 Health and safety issues re electromagnetic radiation (EMR). Children's brains are more susceptible than adult ones, and re belated recognition of a danger, it was decades before it was universally accepted that smoking causes cancer.
- .2 Lack of consultation with locals.
- .3 Lack of information about the process used for WiFi installation and the organisation/s responsible. It's now my understanding that it's the road controlling authority for London Street, i.e. Council, that's responsible.
- .4 Design and appearance sensitivities because of the historic character of Lyttelton. The same issue of *Lyttelton Review* includes an article by David Bundy about the many historic buildings still in London Street post-earthquake.

I ask that the Board consult locals on this WiFi issue.

Also in relation to EMR, it is reported that Daisy Foldesi of Lyttelton and her friend Megan Hancox are having their "smart" electricity meters replaced by the old analogue type. I enclose this report, and a related article, from *Organic NZ* magazine's September/October issue.

Yours faithfully



Elizabeth Graham

Enclosed: 5 pages

## Customers reject smart meters

By Anne Gastinger

Some families, like the Foldes of Lyttelton, have chosen to have their wireless-enabled 'smart' meter deactivated because of health concerns.

But Daisy Foldesi found Genesis, Meridian and Empower uncooperative and unhelpful. "You were made to feel crazy," she says. Trustpower was very helpful.

Daisy's friend Megan Hancox is dealing with Meridian who charges \$85 to have smart meter boxes replaced with an analogue (or 'legacy') meter. Megan was told she must find a certified electrician to undertake this task, but various electricians have said they are not certified to replace meters.

Ned Badis, Meridian's Metering and Field Services Manager states: "We do not support replacement of smart meters with legacy meters, however we do take any issues raised by our customers in regards to any perceived harmful effects from



Photo: Anne Gastinger

Daisy Foldesi of Lyttelton, and baby Ava, with the smart meter she wants removed or deactivated because of health concerns over electro-pollution

emissions from these meters seriously."

See smart meter story on page 43. See also: [stopsmartmeters.org](http://stopsmartmeters.org)

*(attached)*

# Electro-pollution from smart meters

## Dangerously high levels recorded

By Paul Waddell

For over 20 years I have been interested in the effects of electro-pollution, mostly about how it affected me and my family. About a year ago I decided to get more serious about this, and six months ago I completed a block course on EMF testing at an Australian Building Biology College and have been offering a testing and remediation service to people here in New Zealand since then.

I have often tried to measure the output from a customer's smart meter but during a site visit there just isn't the time to accomplish this, as it sometimes requires you to stand there for a long time between pulses. When a friend, Bill, called and asked if could help him measure the three smart meters at his house, I was very keen to try to find out what was really being transmitted from these devices that, unless we try to stop them, will in the next two years be fitted to virtually every house in our land.

Bill is electro-sensitive and has been trying to shield himself from these meters by covering the inside wall and the outside of the meter box with tin foil (great care must be taken if trying this, preferably with the aid of an electrician). Bill also has the top-of-the-line testing equipment from Gigahertz Solutions. With his equipment we could measure a very strong, short duration pulse at an average of 15 minute intervals, but his tester was unable to make a reading as it went beyond the scale of the instrument, which made this a reading over 20,000  $\mu\text{W}/\text{m}^2$  (microwatts per square metre).

To help understand how strong this reading is, the Building Biology Guidelines for sleeping areas has 10  $\mu\text{W}/\text{m}^2$  as a slight concern and greater than 1,000  $\mu\text{W}/\text{m}^2$  as extreme concern.

Bill's meter is a type that measures the total peak reading but not the frequency



Left: A spectrum analyser can measure the strength of signals emitted by smart meters

Secondly, the very high level of power in this signal, dangerously high in my opinion, is also far higher than they claim, and massively higher than any cellphone tower that I have measured. My understanding is that they use an average reading over time to fool people into believing that the reading is very low when it is actually extremely high for a very short duration.

Not only do these smart meters create microwave pollution, but they can also introduce high frequency voltage spike and harmonics (dirty electricity) into the house which is another form of dangerous electro-pollution.

These smart meters are a real hazard and I encourage you all to either strenuously avoid them if you don't have one yet, or contact your power company and request its removal for a non-transmitting meter or change power companies to one that will.

The next step for Bill and me is to set up the equipment on a sunny day (lots of rain lately in Auckland) and data log the smart meters for a day or more to see what is happening over a longer time period. We'll let you know. ☺

Paul Waddell has a certificate in EMF Testing from the Australian College of Environmental Studies and operates an electro-pollution testing consultancy called SafeSpace in Auckland. The links page of his website [www.safespace.co.nz](http://www.safespace.co.nz) offers information and tips for making your home safer.

of the signal. Fortunately, I have a different type of meter called a spectrum analyser which is capable of much higher readings and of recording the frequency. Within half an hour of trying the spectrum analyser we had seen a number of pulses and the final reading we took was a succession of eight pulses one after the other. We were absolutely stunned by the extremely high level of this reading: 1,360,000  $\mu\text{W}/\text{m}^2$ .

This tells us two very important pieces of information, firstly that the power companies are not telling us the full story about how many times a day these meters transmit. Because they are part of a mesh network they can possibly be receiving and transmitting very frequently all day and night to transfer data from other smart meters that may not have such a good connection back to the power company, not the once or twice a day that they claim.

# “lyttelton review”

lyttelton harbour community update

[www.lytteltonharbour.info](http://www.lytteltonharbour.info)

15 October 2012  
E60

## Free Wifi on London Street

What is the Story?

Back in April the Lyttelton Review revealed that the Lyttelton Harbour Information Centre was successful in obtaining a grant from Internet NZ for the introduction of free wifi for Lyttelton's town centre, with the view to ensuring this service would be available for a three year period. The rationale was that it would be a recovery project for the town and supported the goal identified in the master plan.

What is WiFi?

WiFi, as defined by the Ministry of Health<sup>1</sup>, is a way to connect a computer or other mobile device to a computer network using low power radio signals. It may be used to replace cable connections in the home, school or office or to provide mobile internet access through so-called “wireless hot spots” in cities, at airports and in other locations.

The funding grant received will provide Lyttelton with a free public WiFi network to extend from Oxford Street to Canterbury Street along London Street. The Lyttelton Harbour Information Centre sought funding for this project based on the positive feedback from residents to the Lyttelton Master Plan process that identified this as one of the townships recovery projects. To implement the network it is proposed that three small four watt WiFi units will be installed at the top of light poles located along London Street.

Since news was released of the successful grant application, some residents have been questioning the safety of the WiFi system. Whilst some people wanted more information, some residents think that this system should not be implemented on the grounds of claimed health impacts. They claim that the electromagnetic radiation emitted is dangerous to health because it is cumulative and has proven biological impacts on life.

Not being technical experts in the field of WiFi, the Lyttelton Harbour Information Centre board have set about to find out more information on WiFi networks. They have sought expert advice from government, technical experts and anyone who expressed concern about the topic. This article is the result of their findings.

### In support of WiFi:

The World Health Organisation issued Fact Sheet 304 in May 2006 which stated: “Considering the very low exposure levels and research results collected to date, there is no convincing scientific evidence that the weak Radio Frequency signals from base stations and wireless networks cause adverse health effects”.

This view is also supported by the Radiation Safety Laboratory at the University of Princeton: “It is the general consensus of the scientific community that the level of Radio Frequency exposure due to wireless networks is so low compared to the many other Radio Frequency sources in the modern environment that health concerns from WiFi exposure are not an issue.”



## Free WiFi on London Street [Continued]

### Frequently Asked Questions

#### Can exposure to WiFi signals be harmful?

According to the Ministry of Health New Zealand the answer is no<sup>2</sup>. They say measurements in New Zealand and overseas show that exposure to WiFi signals are tiny fractions of the public exposure limit in the New Zealand radio frequency field exposure. The Ministry of Health claims that standard exposures are low for three main reasons:

- The low power of the transmitter
- The rapid decrease in signal strength with increasing distance from the transmitter
- The fact that no signal is transmitted when no data is being transferred [except for brief "beacon signals"]

#### Do people get electromagnetic hypersensitivity from Radio Frequency radiation?

The Swedish Radioactive Safety Laboratory concludes that while the perceived symptoms of people with electromagnetic hypersensitivity are real, there is no evidence to link this to Radio Frequency exposure<sup>3</sup>. There are also multiple examples of studies that conclude the same results, search: Wifi Wikipedia

#### Is WiFi dangerous in New Zealand Schools?

In September 2011 the New Zealand Ministry of Health advised the Ministry of Education "that in the Ministry of Health's view, the installation of WiFi equipment in schools does not pose a health risk to staff or students in the areas where it is used". They further report that "no special precautions are needed when using WiFi equipment, if parents or staff do have concerns to place the wireless access point up on a high shelf, and that computers are put on tables and not laps." <sup>4</sup>

#### Have there been any court cases looking at this issue in New Zealand?

In 1998 Shirley Primary School took the Christchurch City Council to court claiming that the cell phone tower near the school was detrimental to the health of the children. The Environment Court ruled that the risks associated with the tower in causing health issues for children were 1:1,000,000. The risk was considered so small that no actual adverse health effects could be quantified.

#### What is happening in overseas schools?

Some schools in Europe have chosen to adopt a precautionary approach. This is evident in Sweden and France. In many schools there are no WiFi networks only hard wired systems.

#### How much radiation do you get from a hotspot?

The Health Protection Agency United Kingdom says someone sitting in a WiFi hotspot for a year would receive the same dose of radio waves as someone using a mobile phone for 20 minutes. The Health Protection Agency also believes that on the basis of current scientific information WiFi satisfies international guidelines. There is no consistent evidence of health effects from RF exposures below guideline levels and there no reason for schools and others not to use WiFi systems.<sup>5</sup>

#### What is the extent of the WiFi Network in London Street now?

Currently there are WiFi networks in London Street, and operating along the entire length of London Street. This network is mostly a private network. The proposed new network will enable free public access for the whole area. Some people argue that the new network means they will not be able to come down the street because they will be impacted by the radio waves. The radio waves already exist, and the free system will make no difference.

#### Is WiFi a possible carcinogen identified by the World Health Organisation?

The answer is "it is possibly carcinogenic to humans". It should be noted that many other products that we use on a daily basis are also identified as "possibly carcinogenic to humans". Coffee comes to mind immediately. The impact of diesel particulates is another. There are many known carcinogens in our modern lives now.

Article Continues Over Page...





## Free WiFi on London Street [Continued]

### Comments not in support for WiFi

Just because you cannot prove something, it does not mean it is not harmful. Until you know the real causes you should adopt the precautionary principle.

The current standards for radio frequency radiation are not adequate for public health.

The possible health effects in children associated with radio frequency fields have not been fully investigated.<sup>6</sup>

We don't know the long term effects on small children exposed for long periods of time.<sup>7</sup>

New WiFi systems are more powerful.<sup>8</sup>

Some schools, libraries and universities have banned the use of WiFi. This is true in some Swedish and French schools.<sup>9</sup>

Current standards do not take into account the biological impact of the technology "exposure limits were based on physical deliberations solely accepting the existence of biological effects through temperature increase. The occurrence of biological effects far below the exposure limits was totally neglected".<sup>10</sup>

More doctors and medical associations are coming out calling for safer technologies in schools because they do believe there are adverse biological impacts on young children.<sup>11</sup>

Many are saying only have hard wired systems in hospitals and schools and recommend that because they are uncertain of the impact, and to limit exposure to electromagnetic radiation as much as you can.<sup>12</sup>



### In Conclusion:

Based on the limited research undertaken by the Lyttelton Harbour Information Centre, the free WiFi network proposed for the Lyttelton town centre meets current New Zealand government and health guidelines. Lyttelton has already embraced the benefits of WiFi with many businesses, homes and schools using the technology. Under the Lyttelton Master Plan, the Christchurch City Council have identified that new buildings, events and WiFi on London Street, and internal laneways through the town centre, will play a pivotal role in building levels of activity, energy and vitality.

Many city and town centres are using digital technology [WiFi] as a modern, engaging communication platform. WiFi networks can be a dynamic way of increasing the visibility and appeal of the town centre and to ensure it is business friendly. The scheme could allow people with laptops, iPads and mobile devices to connection through a Lyttelton portal to local content that promotes the town, businesses and the community, and to check emails. Offering free public access to a wireless internet network in the Lyttelton town centre would be an effective way of promoting the town, businesses and the community to a wider audience [particularly amongst young people].<sup>13</sup>

For residents who are concerned, it is suggested that you revert back to hard wired networks. For those who want to use the technology, think about switching the devices off when you are not using them to reduce electromagnetic radiation smog. It is the intention of the Lyttelton Harbour Information Centre to recommend this for the free public network. Also consider putting the router further away from your body. If you use a cell phone, do not have it on your body. Carry it in a bag, and always use the headset when taking calls.

Article: Lyttelton Harbour Information Centre

### Links and References:

- 1.Ministry of Health website [www.nrl.moh.govt.nz/faq/wifi.asp](http://www.nrl.moh.govt.nz/faq/wifi.asp)
- 2.Ministry of Health: National Radiation Laboratories [www.nrl.moh.govt.nz/faq/wifi.asp](http://www.nrl.moh.govt.nz/faq/wifi.asp)
- 3.<http://www.stralsakerhetsmyndigheten.se/Global/Publikationer/Rapport/Stralskydd/2009/SSM-Rapport-2009-36.pdf>
- 4.<http://www.esr.cri.nz/competencies/nrl/faq/Documents/Letter-to-Ministry-of-Education-re-WiFi-in-schools-Sep11.pdf>
- 5.The Guardian George Cole Tuesday 19 June 2007.
- 6.BioInitiative Report 2007 [www.bioinitiative.org](http://www.bioinitiative.org)
- 7.University of California June 2008
- 8.[www.magdahavas.com/wifi-in-schools-and-health-effects](http://www.magdahavas.com/wifi-in-schools-and-health-effects)
- 9.<http://articles.mercola.com/sites/articles/archive/2011/06/02/european-leaders-call-for-ban-of-cell-phones-and-wifi-in-schools.aspx>
- 10.Professor Dr Frans Adikofer MD Government Protection against Radiation is In Conflict with Science.
- 11.<http://www.wifiinschools.org.uk/resources/safeschools2012.pdf>
- 12 <http://articles.mercola.com/sites/articles/archive/2011/06/02/european-leaders-call-for-ban-of-cell-phones-and-wifi-in-schools.aspx>
- 13 Lyttelton Master Plan, Page 37

**5. PETITIONS**

**6. NOTICES OF MOTION**

**7. RESERVE MANAGEMENT COMMITTEE**

The minutes of the following Reserve Management Committee meetings are attached.

7.1 Lyttelton Reserves Management Committee – 12 November 2012 (**attached**).

The above minutes may still need to be confirmed by the Committee at its next meeting.

**STAFF RECOMMENDATION**

That the Board receive the minutes of the Lyttelton Reserves Management Committee meeting held on 12 November 2012.



**Minutes of the Lyttelton Reserves Management Committee (LRMC) Meeting  
Held at the Lyttelton Club 23 Dublin Street Lyttelton, on Monday 12 November 2012,  
Commencing at 7.35 pm.**

**Present:** Rob Angelo (Chair), Robert Tobias (Secretary), Richard Hopkins, Gerard Timings, Brian Downey,

**Apologies**

John King (Treasurer), Rewi Couch, Daryl Warnock, Paul Devlin CCC, & Ann Jolliffe (LMHCB), Ian Hankin, , Jozefa Wylaars, Jeremy Agar (LMHCB).

**Minutes from Previous Meeting**

Moved:

“That the minutes as circulated be taken as a true and accurate record”.

Rob Angelo/Gerard Timings

CARRIED

**Matters arising from previous meeting minutes:**

Project - Seat - Gary Broker.

Funding application has been forwarded to Community Board for consideration and Robert Tobias and Philipa Hay are thanked for their contribution toward achieving this. Robert Tobias and Rob Angelo are to discuss further action on this project with Paul Devlin.

Whaka Raupo Planning Sub-Committee

Remains work in progress.

Community Board Minutes

It is noted that the January 2012 Whaka Raupo Reserve Interim Management Plan Review as formally received by the Community Board, continue to be excluded as part of the Community Board Minutes dated xxxx. It is requested that this omission is corrected.

Web Page

Committee members and friends of the committee are urged and encouraged to submit current information to support this page.

In particular relevant photos of fauna and flora found on the reserve are needed. However they do need to be supported with a short commentary which might include names and information on habitat, etc..If they are weeds it might be relevant to say something about why they are noxious.

**Correspondence**

Inward

Letter Christchurch City Council dated 8 Nov 12- Invite to Reserve Management Committees  
Information Seminar – 29 Nov 12

Outward

Funding Application to Community Board.

Moved: That the inward Correspondence be received and the outward approved.

Mr R Hopkins/ Mr G Timings

CARRIED

**Treasurer's Report**

The Treasurer offered an apology for non attendance and there was no Treasurers' Report

**Head Park Ranger's Report**

Mr P Devlin provided the following notes:

- a. Scope and costing for remediation on Urumau and bridle path is underway.
- b. Provided comment to Community Board concerning the fund application for the Broker seat.

**Community Board Representative's Report**

As there was not a Community Board Representative at the meeting, a report was not received.

## **General Business**

### **Pest Control – Possums**

The Committee discussed the ongoing need for possum control in the Reserves. Mr Devlin will contact Mr Hankin and determine what can be done to re-start the trapping or control measures given the current Reserves closure.

### **Mobil Oil Company Pipe Line - Planting**

Gerard Timings raised the question about species planting provenance associated with this project . The Sept LRMC Minutes noted: *"The Company seeks approval to proceed with protective planting to the pipeline in Whaka Raupo Reserve. The Reserves Dept is negotiating with the Company to ensure the correct plant species are used. The Dept will continue to keep the Committee informed of progress on this matter. When planted, the Company will be responsible for the ongoing maintenance of the plants."*

### **Demonstration Planting –Public Areas**

A short discussion took place on the possibility of boundary planting of weed infested areas ( gorse and broom) with native planting with the aim of seed generation that will in time engulf the infested areas with native species. This matter to be discussed with the Head Ranger

### **Invite to Reserve Management Committees Information Seminar – 29 Nov 12**

Robert Tobias, Brian Downey and Rob Angelo are to attend the Seminar and represent the LRMC.

### **Files and LRMC Minutes – Gary Broker**

Robert Tobias will approach Elise Doyer concerning past LRMC records and meeting minutes belonging to the late Gary Broker that may assist the Committee with its management.

### **Next Meeting Date**

The next Committee meeting is to be held on Monday 13 February 2013 starting at 7.30 pm in the Meeting Room of the Lyttelton Club, 23 Dublin Street Lyttelton.

### **Closure**

The Chair thanked all for their attendance and their support during the year and wished those in attendance all the very best for the festive season.

The Meeting closed at 8.20 p.m.

Chairman

Secretary

Date.....

## 8. GOVERNORS BAY – JETTY ROAD, CRESSWELL AVENUE AND MAIN ROAD PARKING RESTRICTIONS

<b>General Manager responsible:</b>	General Manager City Environment, DDI 941-8608
<b>Officer responsible:</b>	Unit Manager Transport and Greenspace
<b>Author:</b>	Mark Millar, Senior Network Engineer

### PURPOSE OF REPORT

1. The purpose of this report is to seek the approval of the Lyttelton/Mt Herbert Community Board for parking restrictions following the construction of approved safety improvements at Governors Bay School and parking improvements on Main Road, Governors Bay.

### EXECUTIVE SUMMARY

1. The safety improvements works were completed in the 2011/2012 year and this report has been prepared to formalise parking restrictions and confirm consultation was completed with immediate neighbours as approved by the Board and as follows:

The Board resolved on 13 December 2011 to:

- (a) Endorse construction of the proposed works this financial year using Minor Safety Budget.
  - (b) Approve the parking layout and parking restrictions on the basis of those shown on Attachment 1 of the report with the condition that a further report be completed to confirm the final layout and parking resolution with accurate and actual measurements for Board approval.
  - (c) Approve the installation of a “Give Way” intersection control at the intersection of Jetty Road with Main Road in Governors Bay.
  - (d) Request staff to report back on consultation with the immediate neighbours affected.
2. Construction of the approved works was completed in the 2011/12 financial year and parking restrictions for these works and road marking improvements on Main Road Governors Bay now require a Board resolution. See **Attachments 1 and 2**.
  3. Staff have consulted in person with the immediate neighbours affected and gained their full support.

### FINANCIAL IMPLICATIONS

4. The construction of this project was completed in the 2011/12 financial year and all costs associated with these works were from 2011/ 12 budgets.

### Do the Recommendations of this Report Align with 2009-19 LTCCP budgets?

5. The installation of kerb and channel, footpaths, road marking and signs is within the LTCCP Streets and Transport Operational Budgets.

### LEGAL CONSIDERATIONS

6. Part 1, Clause 5 of the Christchurch City Council Traffic and Parking Bylaw 2008 provides the Council with the authority to install parking restrictions by resolution.
7. The Community Boards have delegated authority from the Council to exercise the delegations as set out in the Register of Delegations. The list of delegations for the Community Boards includes the resolution of parking restrictions and traffic control devices.
8. The installation of any parking restriction signs and/or markings must comply with the Land Transport Rule: Traffic Control Devices 2004.

8 Cont'd

**Have you considered the legal implications of the issue under consideration?**

9. As above.

**ALIGNMENT WITH LTCCP AND ACTIVITY MANAGEMENT PLANS**

10. Aligns with the Streets and Transport activities by contributing to the Council's Community Outcomes-Safety and Community.

**Do the recommendations of this report support a level of service or project in the 2009-19 LTCCP?**

11. As above.

**ALIGNMENT WITH STRATEGIES**

12. The recommendations align with Council Strategies including the Parking Strategy 2003, Pedestrian Strategy 2001, Road Safety Strategy 2004 and the Safer Christchurch Strategy 2005.

**Do the recommendations align with the Council's strategies?**

13. As Above.

**CONSULTATION FULFILMENT**

14. Consultation was completed with the Governors Bay community by Council staff in conjunction with the Governors Bay Community Association. All the works were safety related and overall received the support of the community. It is noted that these works were generated and proposed following extensive input from the Governors Bay Community Association, Governors Bay School and the Council's Senior Traffic Engineer for this area via publicly invited and attended meetings. Immediate neighbours and property owners with frontages onto the work area were consulted on a personal basis and given full details of the works proposed. They all fully supported the proposal.

**STAFF RECOMMENDATION**

It is recommended that the Lyttelton/Mt Herbert Community Board:

- (a) Revoke all existing parking restrictions as follows:
- (i) From the intersection of Main Road and Jetty Road east along both sides of Jetty Road and then continuing east along both sides of Cresswell Avenue to the western boundary of No. 5 Cresswell Avenue.
  - (ii) From the intersection of Jetty Road and Cresswell Avenue south along both sides of Jetty Road for a distance of 35 metres.
  - (iii) From the intersection of Main Road and Jetty Road in a north west direction along both sides of Main Road for a distance of 60 metres and along both sides of Main Road in a south and then south west direction for 100 metres.
- (b) Approve the following No Stopping restrictions:
- (i) That the stopping of vehicles be prohibited at all times on the south side of Jetty Road commencing at its intersection with Main Road and extending in an easterly direction to its intersection with Cresswell Avenue.
  - (ii) That the stopping of vehicles be prohibited at all times on the west side of Jetty Road commencing at its intersection with Cresswell Avenue and extending in a southerly direction for a distance of 19 metres.

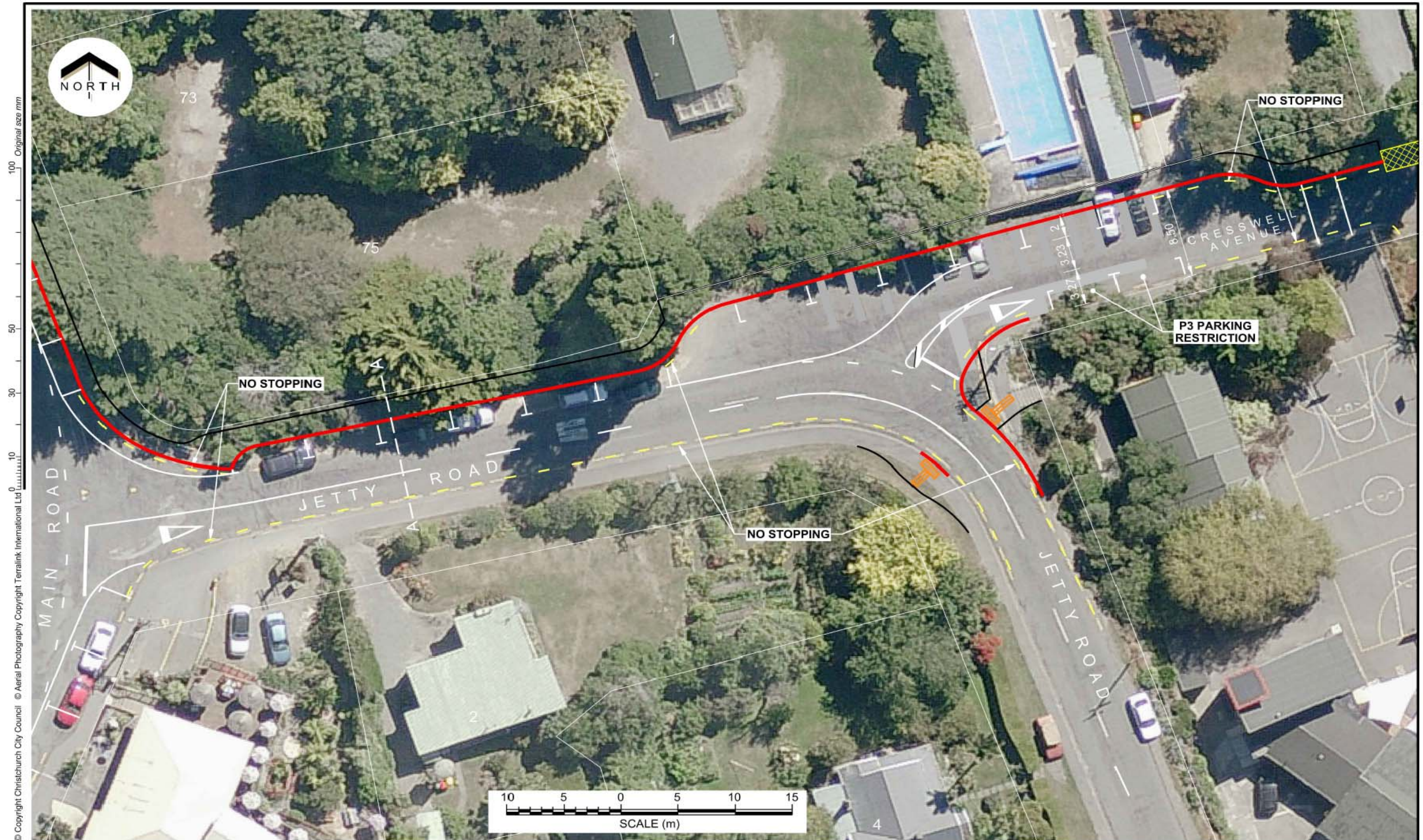
8 Cont'd

- (iii) That the stopping of vehicles be prohibited at all times on the east side of Jetty Road commencing at its intersection with Cresswell Avenue and extending in a southerly direction for a distance of 31 metres.
- (iv) That the stopping of vehicles be prohibited at all times on the south side of Cresswell Avenue commencing at its intersection with Jetty Road and extending in an easterly direction for a distance of 17 metres from the line of the western kerbline on Jetty Road.
- (v) That the stopping of vehicles be prohibited at all times on the south side of Cresswell Avenue commencing 29 metres east of the line of the western kerbline on Jetty Road and extending in an easterly direction for a distance of 16 metres.
- (vi) That the stopping of vehicles be prohibited at all times on the north side of Jetty Road commencing at its intersection with Main Road and extending in a easterly direction for a distance of 12 metres.
- (vii) That the stopping of vehicles be prohibited at all times on the north side of Jetty Road commencing 51 metres east of its intersection with Main Road and extending in a easterly direction for a distance of 7 metres.
- (viii) That the stopping of vehicles be prohibited at all times on the north side of Cresswell Avenue commencing 25 metres east of the line of the western kerbline on Jetty Road and extending in a easterly direction for a distance of 21 metres.
- (ix) That the stopping of vehicles be prohibited at all times on the east side of Main Road commencing at its intersection with Jetty Road and extending in a northerly direction for a distance of 9 metres.
- (x) That the stopping of vehicles be prohibited at all times on the east side of Main Road commencing 25 metres north of its intersection with Jetty Road and extending in a northerly direction for a distance of 4 metres.
- (xi) That the stopping of vehicles be prohibited at all times on the east side of Main Road commencing 43 metres north of its intersection with Jetty Road and extending in a northerly direction for a distance of 16 metres.
- (xii) That the stopping of vehicles be prohibited at all times on the west side of Main Road commencing at the line of the southern kerbline on Jetty Road and extending in a northerly direction for a distance of 30 metres.
- (xiii) That the stopping of vehicles be prohibited at all times on the west side of Main Road commencing at the line of the southern kerbline on Jetty Road and extending in a southerly direction and then south westerly direction for 28 metres.
- (xiv) That the stopping of vehicles be prohibited at all times on the south east side of Main Road commencing at its intersection with Jetty Road and extending in a south westerly direction for a distance of 5 metres.
- (xv) That the stopping of vehicles be prohibited at all times on the south east side of Main Road commencing 29 metres south west of its intersection with Jetty Road and extending in a south westerly direction for a distance of 23 metres.
- (xvi) That the stopping of vehicles be prohibited at all times on the south east side of Main Road commencing 62 metres south west of its intersection with Jetty Road and extending in a south westerly direction for a distance of 13 metres.
- (xvii) That the stopping of vehicles be prohibited at all times on the south east side of Main Road commencing 80 metres south west of its intersection with Jetty Road and extending in a south westerly direction for 20 metres.

**8 Cont'd**

- (c) Approve the following Parking Restrictions:
  - (i) That a P3 (3 minute) parking restriction between 8.15am and 9.15am and 2.30pm and 3.30pm, school days, be installed on the south side of Cresswell Avenue commencing 17 metres east of the line of the western kerbline on Jetty Road and extending in a easterly direction for a distance of 12 metres.
  - (ii) That a P5 (5 minute) parking restriction at all times be installed on the south east side of Main Road commencing 23 metres south west of its intersection with Jetty Road and extending in a south westerly direction for 6 metres.
- (d) Approve the following Bus Stop:
  - (i) That a Bus Stop be installed on the east side of Main Road commencing 29 metres from its intersection with Jetty Road and extending in a northerly direction for a distance of 14 metres.











## 9. APPLICATION TO LYTTTELTON/MT HERBERT YOUTH DEVELOPMENT SCHEME – MILLICENT ST. CLARE SMITH

<b>General Manager responsible:</b>	General Manager, Community Support DDI 941-8607
<b>Officer responsible:</b>	Unit Manager, Community Support Unit
<b>Author:</b>	Philipa Hay Community Development Adviser

### PURPOSE OF REPORT

1. The purpose of this report is to present a request for funding from Millicent St. Clare Smith to the Lyttelton/Mt Herbert Community Board from its Youth Development Scheme.
2. The request is for a contribution towards the cost of attending the 2013 Peewee International Friendship (ice hockey) Tournament in Canada.

### EXECUTIVE SUMMARY

3. Millicent is a Lyttelton resident who is in the Canterbury team travelling to the 2013 Peewee International Friendship Tournament in Aldergrove, British Colombia, Canada. This ice hockey tournament is to be held from 15-25 March 2013. Millicent will turn thirteen years old while at the tournament.
4. The Friendship Tournament is held every two years for 12 and 13 year olds and provides an opportunity for young people around the world to compete in the spirit of friendship and fair play. The focus is on participation and building friendships across the world.
5. Millicent started playing ice hockey three years ago after a visit to her school class by the coach of the 'Red Devils'. (The 'Red Devils' is based in Christchurch and competes in the New Zealand league.) Ice hockey teams are mixed grade up to 16 years. Millicent plays in defence, helping the goalie defend the goal and keep the puck up at the attacking end. In winter, Millicent's team practises and plays weekly. During the summer, the team keeps fit with their summer and holiday programmes.
6. Millicent hopes to be selected for the Canterbury Representative side and play in the 'Nationals'. This is the competition for teams from across the country.
7. In addition to ice hockey Millicent plays grass hockey in winter. In Lyttelton, she is a St. John's cadet. Next year she will graduate as a 'gold member' which enables her to train younger cadets and she will assist with first aid at the 'Festival of Lights'. This year she helped out selling flash badges there to raise funds for the St John's Youth Group. Millicent is also a Lyttelton sea scout, she loves to read and has two dogs and a cat.
8. 17 of the 20 team players come from the Christchurch city area. It is anticipated that there may be up to half a dozen applications to youth development schemes although no other applications have been made to date. Millicent is the only member currently residing in the Lyttelton/Mt Herbert area.
9. At present, the 2012/13 Youth Development Scheme has no funds allocated to it. Should the Board wish to make a grant to the applicant, funds will need to be transferred from the 2012/13 Discretionary Response Fund to the 2012/13 Youth Development Scheme. There is currently a balance of \$17,844 remaining in the Discretionary Response Fund, of which \$4,500 was received as donations for earthquake recovery.

### FINANCIAL IMPLICATIONS

10. The following table provides a breakdown of funding requested, and funds in hand:

## 9 Cont'd

<b>MILLCENT ST. CLARE SMITH</b>	
<b>EXPENSES</b>	<b>Cost (\$)</b>
Airfare	\$ 2,399.00
Coach transfers	\$ 44.44
Travel insurance	\$ 195.50
Accommodation	\$ 394.15
Food	\$ 123.45
Tournament fee	\$ 30.77
Ice time	\$ 114.00
Contribution to manager's costs	\$ 259.45
Equipment (uniform etc)	\$ 1,090.64
<b>Total Cost</b>	<b>\$ 4,651.41</b>
<b>Income</b>	
• <b>Player sponsorship – not included in costs above</b>	<b>\$ 3,600.00</b>
<b>Income</b>	
• Market stalls and 'Trade Me' – selling no longer needed possessions	
• Selling scrap metal from their demolished house	
• Extra duties at home	
<b>Amount Requested from Community Board</b>	<b>Contribution</b>

11. This is the first time the applicant has applied for Youth Development funds from the Lyttelton/Mt Herbert Community Board.
12. Funds will need to be transferred from the Board's Discretionary Response Fund to the Youth Development Scheme to cover this grant. There is currently a balance of \$17,844 remaining in the Discretionary Response Fund.

**Do the recommendations of this report align with 2009-19 LTCCP budgets?**

13. Yes. This application is seeking funding from the Community Board's 2012/13 Youth Development Scheme which has been establishment from the Board's 2012/13 Discretionary Response Fund.

**LEGAL CONSIDERATIONS****Have you considered the legal implications of the issue under consideration?**

14. There are no legal implications in regards to this application.

**ALIGNMENT WITH LTCCP AND ACTIVITY MANAGEMENT PLANS**

15. Aligns with LTCCP and Activity Management Plans pages 172 and 176.

**Do the recommendations of this report support a level of service or project in the 2009-19 LTCCP?**

16. Yes Strengthening Communities page 172 (2009-19 LTCCP).

**ALIGNMENT WITH STRATEGIES**

17. This application aligns with the Council's Youth Strategy, the Strengthening Communities Strategy and the Council Community Grants Funding Outcome:
  - Reduce or overcome barriers to participation

**DO THE RECOMMENDATIONS ALIGN WITH COUNCIL**

18. Strengthening Communities Strategy

**9 Cont'd**

**CONSULTATION FULFILMENT**

19. Not applicable.

**STAFF RECOMMENDATION**

It is recommended that the Lyttelton/Mt Herbert Community Board:

- (a) Transfers \$500 from the Lyttelton/Mt Herbert 2012/13 Discretionary Response Fund to the Lyttelton/Mt Herbert 2012/13 Youth Development Scheme.
- (b) Makes a grant of \$500 from the Lyttelton/Mt Herbert 2012/13 Youth Development Scheme to Millicent St. Clare Smith towards the 2013 Peewee International Friendship Tournament.

## 10. APPLICATION TO LYTTTELTON/MT HERBERT COMMUNITY BOARD 2012/13 DISCRETIONARY RESPONSE FUND

<b>General Manager responsible:</b>	General Manager, Community Services Group, DDI 941-8607
<b>Officer responsible:</b>	Community Support Unit Manager
<b>Assessment undertaken by:</b>	Philipa Hay, Strengthening Communities Advisor

### PURPOSE OF REPORT

1. The purpose of this report is for the Lyttelton/Mt Herbert Community Board to consider an application for funding from its 2012/13 Discretionary Response Fund from Diamond Harbour Community Association for \$15,000 towards Diamond Harbour Presents.

### EXECUTIVE SUMMARY

2. In 2012/13, the total budget available for allocation in the Lyttelton/Mt Herbert Discretionary Response Fund is \$28,554. The Discretionary Response Fund opens each year on 1 July and closes on 30 June the following year, or when all funds are expended.
3. The purpose of the Fund is to assist community groups where the project and funding request falls outside other Council funding criteria and/or closing dates. This fund is also for emergency funding for unforeseen situations.
4. At the Council meeting of 22 April 2010, Council resolved to change the criteria and delegations around the local Discretionary Response Fund.
5. The change in criteria limited the items that the local Discretionary Response Fund does not cover to only:
  - (a) Legal challenges or Environment Court challenges against the Council, Council Controlled Organisations or Community Boards decisions;
  - (b) Projects or initiatives that change the scope of a Council project; and
  - (c) Projects or initiatives that will lead to ongoing operational costs to the Council.

Council also made a note that: *"Community Boards can recommend to the Council for consideration grants under (b) and (c)."*
6. Based on these criteria, the application from Diamond Harbour Community Association for Diamond Harbour Presents is eligible for funding.
7. Detailed information on the application and staff comments are included in the attached Decision Matrix. **(Attachment 1)**

### FINANCIAL IMPLICATIONS

8. There is currently \$17,844 remaining in the Board's 2012/13 Discretionary Response Fund, of which \$4,500 was received as donations for earthquake recovery.

### Do the Recommendations of this Report Align with 2009-19 LTCCP budgets?

9. Yes, see page 184 of the LTCCP regarding community grants schemes including Board funding

### LEGAL CONSIDERATIONS

10. There are no legal considerations.

### ALIGNMENT WITH LTCCP AND ACTIVITY MANAGEMENT PLANS

11. Aligns with LTCCP and Activity Management Plans, page 172 and 176.

**10 Cont'd**

**Do the recommendations of this report support a level of service or project in the 2009-19 LTCCP?**

12. Yes, see LTCCP pages 176 and 177 regarding community grants schemes, including Board funding.

**ALIGNMENT WITH STRATEGIES**

13. Refer to the attached Decision Matrix.

**CONSULTATION FULFILMENT**

14. Not applicable.

**STAFF RECOMMENDATION**

It is recommended that the Lyttelton/Mt Herbert Community Board approve a grant of \$7,000 from its 2012/13 Discretionary Response Fund to Diamond Harbour Community Association for Diamond Harbour Presents.

## 2012-13 DRF LYTTTELTON/MT HERBERT DECISION MATRIX

## Priority Rating

One	Meets all eligibility criteria and contributes significantly to Funding Outcomes and Priorities. Highly recommended for funding.
Two	Meets all eligibility criteria and contributes to Funding Outcomes and Priorities. Recommended for funding.
Three	Meets all eligibility criteria and contributes to Funding Outcomes and Priorities but to a lesser extent than Priority 2 applications. Not recommended for funding.
Four	Meets all eligibility criteria and has minimum contribution to Funding Outcomes and Priorities / Insufficient information provided by applicant (in application and after request from Advisor) / Other funding sources more appropriate. Not recommended for funding.

Organisation Name	Project Name and Description	Project Details	Project Funding	Total Cost	Amount Requested	Staff Recommendation	Priority
00042603 Diamond Harbour Community Association	Diamond Harbour Presents SPRIG, a subcommittee of Diamond Harbour Community Association wishes to provide a 10 week music series held on the site of the now demolished Godley House from mid December 2012 and organise a concurrent Sculpture on the Point exhibition held outdoors and set on the promontory of Stoddart Point. Contribution is sought towards the costs of both events.	Staff: 0 Volunteers: 20 Volunteer hours: 300 Number of participants: 2,000 User fees: \$4,000	CCC funding history (this project only) 2011/12 - \$1,000 (Sublime Sounds at the Point Project) DRF LM  Other sources of funding (this project only) Todd Earthquake Recovery Fund - \$5,000 Creative Communities - \$2,000	\$28,972	\$15,000  58% percentage requested  Contribution sought towards: Artists' installation fees (Sculpture on the Point) - \$5,000 Equipment (toilets) - \$1,000 Promotion - \$4,300 Musicians' fees (Sublime Sounds) - \$4,700	That the Lyttelton Mt Herbert Community Board makes a grant of \$7,000 to Diamond Harbour Community Association towards the Diamond Harbour Presents project.	2
<p><b>Staff Assessment</b></p> <p>SPRIG wishes to reinvigorate the Diamond Harbour area by providing weekly Sunday afternoon music events as they did last summer in Diamond Harbour. This was a regular event in previous years. The aim of the Sunday afternoon events is to support local businesses, maintain a community presence at Godley House and provide a metropolitan destination point.</p> <p>The Sublime Sounds music series, will run over 10 weeks from 16 December 2012 to 24 February 2013 and will offer visitors and the community free musical performances from local musicians. The event will include a day of Diamond Harbour musicians and use many of the professional Lyttelton artists through out the series.</p> <p>The shows will run from 1pm to 4pm each Sunday on the site of the now demolished Godley House. Musicians will perform under a large tree on the site and if inclement the performances will move to the Diamond Harbour Community Hall.</p> <p>SPRIG will consider the weekly events to be successful if there is an average attendance of over 200 people each Sunday.</p> <p>An outdoor sculptural exhibition, the first in its location is to be run over the same period as the music series that will be held. Starting at the ferry jetty at the base of Stoddart Point, sculptures by five New Zealand artists will wind their way up the existing pathway, through Stoddart Point and the Godley House site to the village centre.</p> <p>There will also be art workshops for children held over this event. SPRIG is using local volunteers to undertake all of the organisation requirements.</p> <p>Applications to the Christchurch City Council community funding schemes from this group for this year are not for this or any part of this project. The successful applications to the Creative New Zealand Creative Communities fund this year each covered a portion of the requested amounts for musicians and installation fees. The recommendation for this application excludes the amounts received from these funds.</p>							
<p><b>Alignment with Council Strategies and Board Objectives</b></p> <ul style="list-style-type: none"> <li>Strengthening Communities</li> </ul> <p><b>Alignment with Council Funding Outcomes</b></p> <ul style="list-style-type: none"> <li>Foster collaborative responses</li> <li>Reduce or overcome barriers</li> <li>Provide community based programmes</li> <li>Community participation and awareness</li> <li>Support, develop and promote capacity</li> </ul> <p><b>How much will the project do? (Measures)</b></p> <p>Run 10 music events over the summer. Set up/operate and pack down every Sunday. Promotion of the event and Diamond Harbour as a destination.</p> <p><b>How will participants be better off?</b></p> <p>Individuals will benefit from community members developing a stronger connection to their community networks. Local people and businesses will benefit from more jobs and opportunities, and retain the population base. Businesses will benefit from a better town centre and community facilities which will encourage Diamond Harbour (and wider harbour area) as a metropolitan destination. The community will regain a 'heart' as represented by Godley House and the rejuvenation will encourage support for local businesses and community strength and wellbeing.</p>							
<p><b>Organisation Details</b></p> <p>Service Base: Private Residential address Council Facility: Diamond Harbour Memorial Hall Legal Status: Incorporated Society Established: 1/01/1950 Staff – paid: 0 Staff – unpaid: 30 Target groups: Diamond Harbour residents Audited accounts: 1/01/2011</p> <p><b>Organisation Description/Objectives:</b></p> <p>The Association has the broad interests of the community at heart, and will encourage local initiatives which improve the welfare of residents. All activities are voluntary and cover such projects as the Diamond Harbour Herald, Diamond Harbour website and a bi-annual service directory all of which are used and appreciated by the community on the South side of the Lyttelton harbour. Since the recent earthquakes, residents are particularly concerned that links with Lyttelton are maintained and strengthened.</p> <p><b>CCC Funding History</b></p> <p>DHCA/SPRIG 2012/13 - \$750 (Diamond Harbour Business and Ideas Expo) SGF LM 2012/13 - \$7,578 (Stoddart Point Regeneration Project and Plan Development) SCF LM 2011/12 - \$1,000 (Sublime Sounds at the Point Project) DRF LM DHCA 2008/09 - \$3,000 (Establishment of Diamond Harbour Herald office) SPF LM</p>							

**11. BRIEFINGS**

**12. COMMUNITY BOARD ADVISERS UPDATE**

**12.1 BOARD FUNDING BALANCES**

A copy of the Board's funding balances as at 30 November 2012 is **attached** for members' information.

**12.2 OCTOBER UPDATE ON LOCAL CAPITAL PROJECTS**

The October update on Local Capital Projects is attached (**Attachment 1**) for members' information, along with an update from the Stronger Christchurch Infrastructure Rebuild Team (SCIRT), which is attached (**Attachment 2**).

**12.3 BANKS PENINSULA WATER MANAGEMENT ZONE COMMITTEE – 16 OCTOBER 2012**

The minutes of the Banks Peninsula Water Management Zone Committee meeting held on 16 October 2012 are **attached** for members' information.

**12.4 LOCAL EARTHQUAKE RECOVERY CO-ORDINATION**

This group did not meet in November. The next meeting will be held in January 2013.

**12.5 LYTTELTON CIVIC SQUARE COMPETITION**

The Board has been asked to nominate a member to sit on the panel that will assess the proposals for a design competition for artwork, street furniture, lighting etc in the new Lyttelton Civic Square.

## ATTACHMENT TO CLAUSE 12.1

Lyttelton/Mt Herbert Discretionary Response Fund 2012/13		Board Approval
Budget	\$ 12,799.00	
Unspent funds from 2011/12 projects	\$ 11,255.00	
<b>TOTAL</b>	<b>\$ 24,054.00</b>	
<b>Youth Development Scheme</b>		
<i>Allocations made</i>		
<b>Youth Development Scheme Balance</b>	<b>\$ -</b>	

<b>Discretionary Response Fund - Total Allocation</b>	<b>\$24,054.00</b>	
<i>Allocations made</i>		
Sumner Patrol Watch Car	\$ 500.00	20.9.2012
Governors Bay Pottery Group	\$ 3,210.00	15.11.2012
Otamahua/Quail Island Ecological Restoration Trust	\$ 4,000.00	15.11.2012
Lyttelton Reserves Management Committee	\$ 1,500.00	15.11.2012
Lyttelton Volunteer Fire Brigade	\$ 1,500.00	15.11.2012
<b>Discretionary Response Fund Balance</b>	<b>\$10,710.00</b>	

<b>TOTAL: Lyttelton/Mt Herbert Discretionary Response Fund Unallocated</b>	<b>\$13,344.00</b>
--	--------------------

<b>Earthquake Donations</b>		
Pahiatua on Track (Community Board)	\$500.00	
Otago Peninsula Community Board	\$ 4,000.00	
<i>Allocations made</i>		
<b>Earthquake Donations Fund Balance</b>	<b>\$ 4,500.00</b>	



## OCTOBER 2012 UPDATE OF CURRENT PROJECTS FOR ELECTED MEMBERS FROM CHIEF EXECUTIVE TONY MARRYATT

### GENERAL INFORMATION

#### **Stronger Christchurch Infrastructure Rebuild**

The latest update on the infrastructure rebuild progress was presented to the Council's Environment and Infrastructure Committee on [1 November](#).

The number of SCIRT work sites across the city is increasing and regular surveys of affected residents have shown good results. The most recent research, based on 300-plus phone interviews, shows a good awareness and understanding of the infrastructure rebuild work, costs involved and programme timeframes. The forward programme for work over the next four years was launched recently and the surveys show residents have understood the way work has been prioritised. The survey shows more than 93 per cent of people are confident that the most critical infrastructure work is being done first and more than 87 per cent are satisfied with progress so far.

Detailed information on the forward schedule, including a visualisation tool, can be found online at [www.strongerchristchurch.govt.nz](http://www.strongerchristchurch.govt.nz).

#### **Sumner Road**

Sumner Road (the road from Lyttelton to the summit at Evans Pass) remains closed due to the impacts of significant rockfall as a result of the earthquakes. Several options for re-opening Sumner Road are being developed. The options principally involve varying levels of rock stabilisation and removal to lessen the risk of further rock fall in the event of future significant seismic events.

There is a general correlation between risk reduction and the amount of rock requiring removal/stabilisation. Cost estimates and further investigations of the options are underway. This information will allow more detailed discussions to occur with regard to which option to proceed with. Early engagement with key stakeholders, (Lyttelton Port Company, NZTA and the Department of Conservation) advising them of the scope of the investigations and expected timeframes is underway.

Evans Pass Road (the road from Sumner to the Summit Road) was opened to all vehicles on Sunday 4 November 2012.

#### **Ferrymead Bridge**

As reported last month, the detailed design of the new bridge has proven complex due to site conditions. The 1 November Environment and Infrastructure Committee considered a Council report on the design and costings for the new bridge and this will go to full Council on 22 November.

Work continues on the construction of the approaches for the temporary bridges, with work on schedule to divert traffic to the temporary bridges by mid-January 2013 and demolition to begin later that month on the existing bridge.

#### **Commercial Rebuilds**

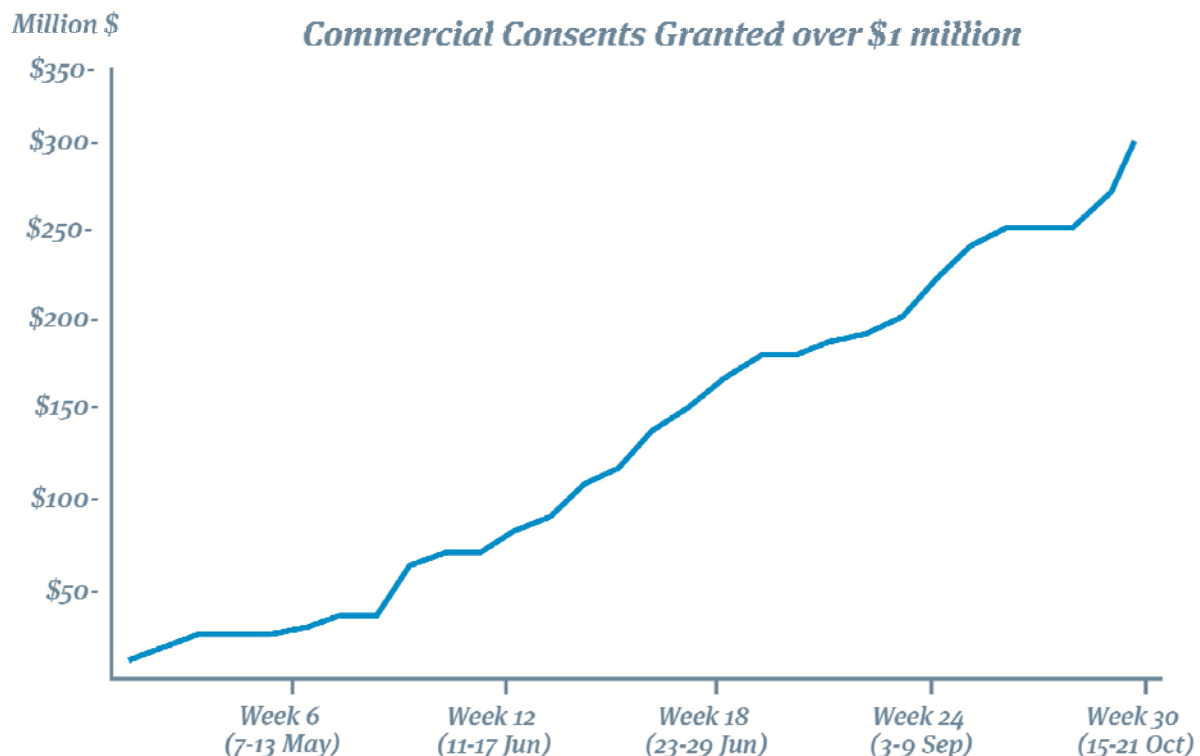
The total value of work for major commercial building consents (worth over \$1 million each) issued in the city has increased \$338.9 million over a 32 week period.

## ATTACHMENT 1 TO CLAUSE 12.2

The figures include 104 projects which have been granted building consent, and range from repairs to new builds, and existing customers being granted further building consents for the next stage in their project.

Twenty-six of the projects are within the Four Avenues. The value of work for these building consents is \$123.3 million.

The following graph was created for the period of 30 weeks when the value of major commercial building work across the city reached \$308.5 million.



### Suburban Centres Programme

The Draft Sumner Village Centre Master Plan has been approved for consultation which will take place from 8 November until 12 December. Council staff are currently drafting the New Brighton and Edgware Master Plans. Case management continues in all earthquake-affected suburban commercial centres. The status of master plans is as follows:

- Lyttelton and Sydenham Master Plans – work has commenced on preparing project plans for the initial implementation projects.
- Selwyn Street Shops Master Plan – printed copies of the final Master Plan are available for the public in any open Council service centres and libraries. It is also available online at [www.ccc.govt/suburbancentres](http://www.ccc.govt/suburbancentres)
- Linwood Village Master Plan – printed copies of the final Master Plan are available for the public in any open Council service centres and libraries. It is also available online at [www.ccc.govt/suburbancentres](http://www.ccc.govt/suburbancentres).
- Interim Ferry Road Draft Master Plan (Stage 1) – the Draft Master Plan is scheduled for consideration by the Hagley/Ferrymead Community Board on 14 November before going to the full Council for approval to consult with the public Monday 28 January–Thursday 28 February 2013.

## ATTACHMENT 1 TO CLAUSE 12.2

- Sumner's 'Community-led' Master Plan – the Draft Master Plan has been approved by the Council for consultation Thursday 8 November–Wednesday 12 December. Two drop-in sessions will be held during the consultation period for people to view the Plan, discuss its contents with Council staff and make submissions. Details of the drop-in sessions are:
  - Wednesday, 21 November, 3.30pm–6.30pm
  - Saturday, 24 November 2012, 10.30am–2pm
 Old Sumner School Hall, 18–28 Wiggins Street, Sumner.
- Edgware Village Master Plan – Council staff are now working on drafting the Master Plan, which is programmed to be approved for consultation early in the New Year.
- New Brighton Centre – Council staff are now working on drafting the master plan, which is programmed to be approved for consultation in December.

### Council Facilities Rebuild Plan

The Council has re-opened the newly repaired Cowles Stadium in Aranui and the Curator's House in Christchurch Botanic Gardens in the past month. Mayor Bob Parker officially re-opened the stadium on 12 October.

Repairs to the New Brighton Whale Pool on the New Brighton Foreshore and the Christchurch Botanic Gardens Paddling Pool are underway. The pools are expected to re-open during Show Weekend, which is the time of the year they usually open. Repairs are also underway on Woodham Pool in Linwood and Abberley Park in St Albans but these are now expected to open later in the year.

Repairs have been completed on the Poseidon Café in Sumner and the existing tenant hopes to re-open the bar and restaurant in November.

Repairs continue to progress well on a number of other facilities across Christchurch. These include Linwood Community Arts Centre, Avebury House in Richmond and the Youth Hostel Association Hostel, corner of Rolleston Avenue and Worcester Boulevard.

Building consent applications have also been lodged for repairs and earthquake strengthening on the Edmonds Clock Tower and the Victoria Clock Tower (Jubilee Clock). A timeframe for when the work will begin once the consents are granted.

Council staff have also recently approved repairs to five social housing units, with the work due to be completed by Christmas. These are in the Collett Courts, Lyn Christie Place and Thurso Street complexes. Investigations are continuing into a number of projects which will aim to increase the number of social housing units on existing sites. A proposal will be presented to elected members for consideration in due course.

A draft prioritised programme for the non-residential facilities in the Facilities Rebuild Plan project that are not included in the Council's priority 30 list of facilities was presented to community boards for their input on 23 October. Community boards have until 9 November to provide feedback on the draft prioritised programme. The final prioritised list will be presented to the Council for approval on 6 December. This list prioritises the order in which investigations will be done on a facility, which will in turn help to inform decisions made about it. The prioritised list does not set out when a facility will be repaired or other work carried out.

The Detailed Engineering Evaluation (DEE) programme on both Council non-residential and residential facilities continues to progress well.

### **Recreation and Sport**

The first-ever The Breeze Walking Festival took place in September, connecting people and places in Christchurch's eastern suburbs. It was a huge success, with over 1000 people estimated to have joined in over the nine days.

The BMW NZ Open, a pro golf tournament with discounted entry prices for Christchurch residents, is being planned for late November at Clearwater Golf Club. Canterbury Paralympians Sophie Pascoe and Anthea Gunner were congratulated on their performance at the London 2012 Paralympic Games by Mayor Bob Parker.

### **Christchurch City Libraries**

Christchurch City Libraries has received two mobile library vans as a result of a funding application for earthquake support from Rotary New Zealand. The vans will be launched in New Brighton on Saturday 1 December and will be on the road from Monday 3 December. The launch will coincide with the New Brighton Christmas Parade and the three-on-three basketball tournament. Both vans will feature as part of the parade, and will be set up for use by the public for the rest of the day. Rotary New Zealand has sought and received funding for this project, with one van funded by Rotary International, and the other van funded through a partnership with Rotary International and the Cotton On Foundation.

### **Christchurch Art Gallery Te Puna o Waiwhetu**

The artists in Christchurch Art Gallery's latest Rolling Maul exhibition Keep left, keep right invite viewers to slow down and take notice of the city that surrounds them.

The exhibition features large-scale paintings by Miranda Parkes and Tjalling de Vries, as well as a projected work by Parkes. Both University of Canterbury graduates who live in Christchurch, Parkes and de Vries, explore the creative possibilities of large-scale, pre-existing images, using repurposed surfaces as the starting points for their paintings. The Keep left, keep right exhibition runs until 18 November in the gallery above NG Gallery in Madras Street.

### **Botanic Gardens Visitor's Centre**

Tenders for construction have closed and three tenders have been evaluated. The report is due to go to a special meeting of the Environment and Infrastructure committee on 28 November, and to the Council on the 6 December. The scheduled completion date for construction is December 2013.

### **Christchurch Southern Motorway (CSM) and Aidanfield Drive Underpass**

The overall CSM project is now targeting a date for an official opening ceremony in the week of 10 December. This is ahead of the contract planned date of February 2013 but is still dependent on good weather in Spring to complete the remaining work. It is likely that sections of the new motorway will be partially open for traffic under temporary traffic management and lane restrictions towards the end of November.

### **Council events**

New Zealand Cup and Show Week will run from Saturday 10 to Saturday 17 November. The event project is progressing well and the new look website [www.nzcupandshow.co.nz](http://www.nzcupandshow.co.nz) went live on

1 August. The event tabloid was distributed in The Press on Wednesday 17 October and in the Southland Times on Thursday 18 October.

Planning for Summertimes is underway. Kicking off with New Year's Eve party, it will run through January, February and March and offer free outdoor entertainment. The 2013 celebrations will include a performance of Wind in the Willows, starring Mark Hadlow as Toad, as well as Classical Sparks, Lazy Sundays, Sunday Bandstand, Tip Top Kite Day and various community-based events.

**ATTACHMENT 1 TO CLAUSE 12.2**

The Treotech Guy Fawkes Fireworks Spectacular returned to New Brighton Pier at 9pm on Monday 5 November. Following an initial light show at 9pm, a choreographed fireworks display courtesy of Christchurch company Firework Professionals lit up the skies over New Brighton, set to a soundtrack that was simulcast on The Breeze 94.5FM.

With Christchurch's traditional home of Christmas (Cathedral Square) still unavailable, work is underway to rebrand Latimer Square as a new home for Christmas celebrations in Christchurch beginning on Friday 7 December. Festivities will include Carols by Candlelight, the Telecom Christmas Tree, the Christmas Encraftment Market and, if the new Cathedral is not up and running, Midnight Mass.

Summer will be heralded by the return of the Summer Pool Parties, beginning on Saturday 15 December.

Neighbourhood week runs from 27 October – 4 November 2012 with various community activities throughout the week.

Kind regards

Tony

See Appendix attached for capital projects by ward area

**Appendix:****CAPITAL PROJECT STATUS FOR WARD AREAS****(Those not mentioned in the roundup of major projects).****(Major projects in bold).****Hagley/Ferrymead**

• Test Cricket	Capital Facilities	Build
• Pioneer Learn to Swim Pool	Capital Facilities	Defects Liability
• WW Pressure Main 11 - Randolph Street	CWW	Build
• Wastewater Pump Station PS0070 - Taylors Mistake Electrical Upgrade	CWW	Build
• Wastewater Pump Station PS0010 - Linwood electrical upgrade	CWW	Build
• WW Fendalton Duplication	CWW	Build
• Digester 2-4 Refurb - Digester 3	CWW	Build
• WS St Johns New Well	CWW	Build
• WS Ferrymead Booster Station	CWW	Build
• WW CWTP Odour Containment (Stage 2)	CWW	Build
• WW CWTP Electrical Instrumentation and Control Renewals	CWW	Build
• Lift Electrical Equipment to Avoid Flood	CWW	Build
• WW CWTP Ongoing Renewals Programme	CWW	Build
• Backup Power Generator	CWW	Defects Liability
• WW CWTP Allen Engines Replacement	CWW	Build
• WW WI Future Stages	CWW	Build
• Victoria Reservoirs 2 and 3 Replacement	CWW	Detailed Design
• Grit Tank Upgrade for EQ Resilience	CWW	Detailed Design
• Flare Upgrade	CWW	Detailed Design
• St John Diesel Generator Renewal	CWW	Handover
• Biosolids Holding Tank	CWW	Handover
• Wastewater Pump Station PS002 - Hereford electrical upgrade	CWW	Investigation
• Enlarge Grit Tank & Sedimentation Tank I	CWW	Investigation
• WW CWTP Secondary Treatment Upgrade	CWW	Investigation
• Wastewater Pump Station PS0012 – Smith electrical upgrade	CWW	Preliminary Design
• Grit Tank Efficiency Improvements	CWW	Preliminary Design
• Biosolids Dewatering Renewal	CWW	Preliminary Design
• CWTP 5th & 6th Digester	CWW	Warranty Period
• WW CWTP Biosolids Drying Facility	CWW	Warranty Period
• Steamwharf Stream @ St Johns St	Greenspace	Build
• Ferrymead Park development	Greenspace	Build
• Heathcote Valley Reveg	Greenspace	Build
• Botanic Gardens Irrigation Renewal	Greenspace	Build
• Washington Reserve	Greenspace	Build
• Greenwood Park Reveg	Greenspace	Detailed Design
• Brownlee Reserve Playground	Greenspace	Build
• Brownlee Reserve Development	Greenspace	Detailed Design
• Robert McDougal Art Gallery Strengthening	Greenspace	Investigation
• Botanic Gardens Collection Renewals	Greenspace	Investigation

• Mt Pleasant Barnett Gulley	Greenspace	Investigation
• Hagley Park Green Assets Renewal	Greenspace	Investigation
• Stormwater Pump Station PS 209 Celia upgrade	Greenspace	Preliminary Design
• Botanic Gardens Entry Pavilion	Greenspace	Tender
• Botanic Gardens Boiler	Greenspace	Tender
• Botanic Gardens Tree Replacements	Greenspace	Investigation
• Hagley Park Tree Renewal Programme	Greenspace	Design
• Ferrymead Bridge	Transport	Build
• Ferry Rd/Humphreys Dr Intersection	Transport	Defects Liability
• Main Rd (3 Laning)	Transport	Detailed Design
• McCormack's Bay Culvert Bridge Renewal	Transport	Detailed Design
• Carnarvon Street Kerb and Channel Renewal	Transport	Preliminary Design
• Dacre Street Kerb and Channel Renewal	Transport	Preliminary Design
• Fitzgerald Ave Twin Bridges	Transport	Investigation
• Ferry & Moorhouse Road Widening (Aldwins to Fitzgerald)	Transport	Investigation
• Skateboard Facility – Sumner / Redcliffs	Greenspace	Investigation
• Botanic Gardens Riverbank	Greenspace	Detailed Design

#### Riccarton/Wigram

• Halswell - New Library	Capital Facilities	Investigation
• WS Wilmers Road Pump Station	CWW	Build
• WS Carmen Road	CWW	Detailed Design
• WS Halswell Junction from Wilmers Road	CWW	Detailed Design
• Carmen Rd Sewer Mains Renewal	CWW	Detailed Design
• WW Wigram PM & PS 105	CWW	Detailed Design
• Keyes Road Pump Station	CWW	Detailed Design
• Springs Road New Water Main	CWW	Handover
• Awatea Block New Sewer Main	CWW	Handover
• WW PS123 Awatea Pumping Station	CWW	Investigation
• Wastewater Pump Station PS0042 – Sparks electrical upgrade	CWW	Preliminary Design

### 13. 12. 2012

Halswell Quarry Revegetation	Greenspace	Build
• Awatea South Basin	Greenspace	Build
• Carrs Road S/W Facility	Greenspace	Build
• Sockburn Park Extn	Greenspace	Build
• Halswell Domain Extension Development	Greenspace	Build
• Minor Piping Projects	Greenspace	Build
• Wigram Retention Basin - Construction	Greenspace	Build
• Lower Milns	Greenspace	Build
• Westmoreland Reveg	Greenspace	Build
• Wigram Playground	Greenspace	Build
• Awatea Basin	Greenspace	Build
• Quarry Hill Reserve	Greenspace	Detailed Design
• Owaka & Awatea Green Corridor	Greenspace	Detailed Design
• Owaka Basin	Greenspace	Detailed Design
• Halswell Domain Car Park	Greenspace	Tender
• Days Drain	Greenspace	Investigation
• Quaiffes/Murphys basin and Wetland	Greenspace	Investigation
• Kirkwood Basin	Greenspace	Preliminary Design
• Major Cycleway: Southern Motorway Connections	Transport	Build
• Aidanfield Drive Underpass	Transport	Build
• Seton Street Kerb and Channel Renewal	Transport	Preliminary Design
• Carrs Rd Cycle & Pedestrian Bridge	Transport	Preliminary Design
• University Crossings	Transport	Preliminary Design
• Clyde Road Pedestrian Signals	Transport	Preliminary Design
• Wigram Magdala Link	Transport	Preliminary Design
• Wigram Road Extension: Halswell Junction to Marshs	Transport Investigation	
• Wigram Road Upgrade	Transport	Investigation
• WS Foster St Mains renewal	CWW	Detailed Design

### Shirley/Papanui

• Graham Condon Leisure Centre	Capital Facilities	Defects Liability
• Natural Areas Protective Fencing - Styx Mill Reserve	Greenspace	Build
• Redwood Springs	Greenspace	Build
• Redwood Springs Detention Basins	Greenspace	Build
• Mundys Drain Radcliffe Road	Greenspace	Build
• The Groynes Development	Greenspace	Build
• Spencer Park Tree Replacement	Greenspace	Build
• Kruses Drain	Greenspace	Detailed Design
• Shearer Reserve Playground	Greenspace	Detailed Design
• Torlesse St	Transport	Defects Liability
• Mays Rd (Papanui - Bretts)	Transport	Defects Liability
• Northern Arterial Extension (Cranford - QEII)	Transport	Investigation
• Intersection Improvement: Belfast / Marshland	Transport	Preliminary Design
• Cranford Street Upgrade (4 Laning)	Transport	Preliminary Design
• Intersection Improvement: Greers / Northcote / Sawyers Arms	Transport	Preliminary Design
• Langdons Rd - Greers Rd - Ellery Street Kerb and Channel Renewal	Transport	Preliminary Design



### 13. 12. 2012

• Jacobs Street Kerb and Channel Renewal	Transport	Preliminary Design
• Bennett Street Kerb and Channel Renewal	Transport	Preliminary Design
• Northcote Road 4 laning	Transport	Investigation
• Grassmere / Rutland Cycleway	Transport	Investigation
• Redwood School Speed Zone	Transport	Investigation
• Brooklands Lagoon Reserve Development	Greenspace	Investigation

### Spreydon/Heathcote

• WS Cashmere Rd Water Mains Renewal	CWW	Tender
• Bowenvale	Greenspace	Commissioning
• Regional Parks MTB Tracks Renewals	Greenspace	Build
• Cashmere Stream Green Corridor	Greenspace	Detailed Design
• Hunter Tce Reserve	Greenspace	Detailed Design
• Macaulay St	Transport	Defects Liability
• Dyers Pass Rd Curve Realignment	Transport	Defects Liability
• Cashmere High School- Barrington Street Signalised Crossing	Transport	Investigation
• Intersection Improvement: Frankleigh / Lyttelton	Transport	Investigation
• Wembley Street Kerb and Channel Renewal	Transport	Preliminary Design
• Cheviot Street Kerb and Channel Renewal	Transport	Preliminary Design
• Leitch Street Kerb and Channel Renewal	Transport	Preliminary Design
• Sydney Street Kerb and Channel Renewal	Transport	Preliminary Design
• Dunn Street Kerb and Channel Renewal	Transport	Preliminary Design
• Hassals Lane Kerb and Channel Renewal	Transport	Preliminary Design
• Percival Street Kerb and Channel Renewal	Transport	Preliminary Design
• Rosebery Street Kerb and Channel Renewal	Transport	Preliminary Design
• Stenness Avenue Kerb and Channel Renewal	Transport	Preliminary Design
• Birdwood Avenue Kerb and Channel Renewal	Transport	Preliminary Design
• Bolton Avenue Kerb and Channel Renewal	Transport	Preliminary Design
• Boon Street Kerb and Channel Renewal	Transport	Preliminary Design
• Heathcote Street Kerb and Channel Renewal	Transport	Preliminary Design
• Canterbury Park Access	Transport	Preliminary Design
• Cashmere / Centaurus / Colombo / Dyers Pass Intersection Improvement:	Transport	Preliminary Design
• Fairview St footbridge upgrade	Transport	Tender
• Lincoln Road Widening (Curletts to Wrights)	Transport	Investigation
• Intersection Improvement: Brougham / Burlington	Transport	Investigation
• Intersection Improvement: Hoon Hay / Sparks	Transport	Investigation
• Aynsley Terrace	Greenspace	Preliminary Design
• Centaurus Road / Palantine Terrace	Greenspace	Preliminary Design
• Eastern Terrace	Greenspace	Preliminary Design

### Fendalton/Waimairi

• WS Crosbie Well Renewal	CWW	Build
• NW NZDWS Compliance	CWW	Build
• WW Wairakei Diversion	CWW	Investigation
• Burnside PS Well Replacement Project	CWW	Build
• Farrington PS Well Replacement Project	CWW	Build

### 13. 12. 2012

• Mona Vale Irrigation Renewal	Greenspace	Build
• Neighbourhood Parks Playground Equipment	Greenspace	Build
• Roto K Carpark	Greenspace	Detailed Design
• Mona Vale Tree Replacement	Greenspace	Build
• Frees Creek/St Andrews College	Greenspace	Preliminary Design
• Colombo Street Bridge (over Heathcote)	Transport	Detailed Design
• Intersection Improvement: Glandovey / Idris	Transport	Investigation
• Intersection Improvement: Gardiners / Sawyers Arms	Transport	Preliminary Design

### Burwood/Pegasus

• Aranui - New Library	Capital Facilities	Defects Liability
• Cowles Stadium upgrade	Capital Facilities	Build
• Tsunami Warning System	Capital Facilities	Warranty Period
• Lake Terrace WSPS New Well	CWW	Build
• Wainoni Park Extension	Greenspace	Build
• Shepards Stream	Greenspace	Build
• Coast Care Development	Greenspace	Build
• Bottle Lake Forest Park	Greenspace	Build
• Stormwater Pump Station PS 205 electrical upgrade design	Greenspace	Investigation
• Prestons/Clare Park Stormwater	Greenspace	Investigation
• Seafield Park Planting	Greenspace	Investigation
• Travis Wetland - Beach Rd Carpark entrance	Greenspace	Investigation
• Old Waimakariri Bridge	Transport	Defects Liability
• Intersection Improvement: Marshland / Prestons	Transport	Preliminary Design
• Pages Road	Transport	Investigation

### Lyttelton/Mt Herbert

• WW Lyttelton STP R&R	CWW	Investigation
• WS Rapaki Fire Flow Upgrade	CWW	Defects Liability
• WS Extension to Charteris Bay	CWW	Tender
• WW Extension to Charteris Bay	CWW	Tender
• Harbour Structures	Greenspace	Build
• Corsair Bay Development Plan	Greenspace	Build
• ST Banks Peninsula: New Kerb & Channel	Transport	Investigation

### Akaroa/Wairewa

• WS DWSNZ Upgrade Bird Flat	CWW	Commissioning
• WS DWSNZ Upgrade Pigeon Bay	CWW	Commissioning
• Muter St Sewer Mains Renewal	CWW	Defects Liability
• Watsons Road Sewer Mains Renewal	CWW	Defects Liability
• Chch-Akaroa Rd Infra R & R Submain	CWW	Detailed Design
• Wairewa Pa Rd Infra R&R Submain	CWW	Detailed Design
• WS NZDWS Upgrade Wainui	CWW	Detailed Design
• WS Little River Increased Supply	CWW	Detailed Design
• WS Akaroa Water Upgrade	CWW	Detailed Design

**13. 12. 2012**

• WS DWSNZ Upgrade Duvauchelle	CWW	Handover
• WW New Akaroa Wastewater Treatment Plant	CWW	Investigation
• WW Wainui Sewer Retic & WWTP	CWW	Tender
• Awa-Iti Domain Development	Greenspace	Build
• Ataahua Domain Res Dev	Greenspace	Build
• Garden of Tane Res Dev	Greenspace	Build
• Robinsons Bay Reserve Development	Greenspace	Build
• Akaroa Stormwater	Greenspace	Build
• Akaroa Stormwater Improvements	Greenspace	Build
• Sports Park Path reseals 2011	Greenspace	Commissioning
• Okains Bay development	Greenspace	Detailed Design
• Misty Peaks/Banks Peninsula Revegetation	Greenspace	Detailed Design
• Stanley Park Development	Greenspace	Preliminary Design
• Banks Peninsula: Road Metalling	Transport	Investigation

## SCIRT COMMUNITY BOARD REPORT

OCTOBER 2012

## LYTTELTON-MT HERBERT

STATUS	TIMING	EVENT	TRAFFIC IMPACT	DELIVERY TEAM	SUPPORTING COMMUNICATION			
On-going	3 July to early November 2012.	Ticehurst Road, (stage one) Lyttelton, replacement and repair of three retaining walls.	Partial road closures on Ticehurst Road. No through traffic on Ticehurst Road.	Fletcher	✓	Work notice		e-newsletter
					✓	Door-knocking	✓	Twitter
						Advertisement	✓	Signage
						Media release	✓	Meetings
						Website article		
						Work notice update delivered • 13 September 2012		
On-going	18 June to early November 2012.	Dublin Street, Lyttelton, repairs and replacement works to retaining wall.	Two-way traffic maintained with loss of on-street parking.	Fletcher	✓	Work notice		e-newsletter
					✓	Door-knocking	✓	Twitter
						Advertisement	✓	Signage
						Media release	✓	Meetings
						Website article		
						Other (detail)		

13. 12. 2012

ATTACHMENT TO CLAUSE 12.3

**BANKS PENINSULA WATER MANAGEMENT ZONE COMMITTEE  
16 OCTOBER 2012**

**A meeting of the Banks Peninsula Water Management Zone Committee was held in Governors Bay Hotel on Tuesday 16 October 2012 at 5.30pm**

**PRESENT:** Richard Simpson, Community Representative (Chairperson)  
Donald Couch, Commissioner Environment Canterbury  
Yvette Couch-Lewis, Community Representative  
Iaeen Cranwell, Te Rūnanga o Wairewa  
Steve Lowndes, Community Representative  
Pere Tainui, Te Rūnanga o Ōnuku  
Kevin Simcock, Community Representative  
June Swindells, Te Hapu O Ngati Wheke

**APOLOGIES:** An apology for absence was received and accepted from Councillor Claudia Reid, Pam Richardson, and Wade Wereta-Osborn.  
Iaeen Cranwell and Pere Tanui arrived at 5.40pm and were absent for clauses 1, 2 and 3.  
Yvette Couch-Lewis arrived at 5.45pm and was absent for clauses 1, 2, 3 and part of 5.

**1. CONFIRMATION OF MINUTES – 18 SEPTEMBER 2012**

It was **decided** that the minutes 18 September 2012 be approved as a true and accurate record, subject to the following amendment:

Clause 7 (Coastal Plan)

- The role of the Zone Committee will be through the submission *a collaborative* process under the Resource Management Act.

**2. DEPUTATIONS BY APPOINTMENT**

Nil.

**3. IDENTIFICATION OF URGENT ITEMS**

Nil.

**4. REFLECTIVE QUESTIONS REGARDING ZONE IMPLEMENTATION PROGRAMME**

The Committee was unable to hear reflective questions due to the time constraints of the meeting.

**5. FINALISING OF DRAFT ZONE IMPLEMENTATION PROGRAMME**

The Committee **agreed** to accept the draft zone implementation programme as amended and recommend that it is released for public consultation.

**6. PUBLIC MEETING ARRANGEMENTS**

Ian Whitehouse, Environment Canterbury, briefed the Committee on the public meeting arrangements and offered suggestions on group discussion.

**7. IDENTIFICATION OF GENERAL PUBLIC CONTRIBUTIONS**

Nil.

The meeting concluded at 9pm.

**CONFIRMED THIS 20TH DAY OF NOVEMBER 2012**

**RICHARD SIMPSON  
CHAIRPERSON**

**13. 12. 2012**

**13. ELECTED MEMBERS' INFORMATION EXCHANGE**

**14. QUESTIONS UNDER STANDING ORDERS**