

**HAGLEY/FERRYMEAD COMMUNITY BOARD
AGENDA**

WEDNESDAY 19 DECEMBER 2012

AT 3PM

**IN THE BOARD ROOM, WOOLSTON CLUB
43 HARGOOD STREET, WOOLSTON, CHRISTCHURCH**

Community Board: Bob Todd (Chairperson), Islay McLeod (Deputy Chairperson), Tim Carter, David Cox, Yani Johanson, Brenda Lowe-Johnson and Nathan Ryan.

Community Board Adviser:
Jo Daly
Phone: 941 6601 DDI
Email: jo.daly@ccc.govt.nz

- PART A - MATTERS REQUIRING A COUNCIL DECISION**
- PART B - REPORTS FOR INFORMATION**
- PART C - DELEGATED DECISIONS**

INDEX	PG NO
PART C 1. APOLOGIES	2
PART C 2. CONFIRMATION OF MINUTES – 5 DECEMBER 2012	2
PART B 3. DEPUTATIONS BY APPOINTMENT	2
PART B 4. PRESENTATION OF PETITIONS	2
PART B 5. NOTICES OF MOTION	2
PART B 6. CORRESPONDENCE	2
6.1 Pat McIntosh	
6.2 Glen and Di Percaskey	
PART B 7. BRIEFINGS	2
7.1 Canterbury Earthquake Recovery Authority - Operations	
PART C 8. 724 GLOUCESTER STREET – PROPOSED PARKING AND BUS STOP RESTRICTIONS	8
PART B 9. MAIN ROAD AND AUGUSTA STREET – REPORT ON INSTALLATION AND FUNDING OF TRAFFIC SIGNALS	12
PART B 10. COMMUNITY BOARD ADVISER’S UPDATE	15
PART B 11. QUESTIONS UNDER STANDING ORDERS	15
PART B 12. BOARD MEMBERS’ INFORMATION EXCHANGE	15

1. APOLOGIES

2. CONFIRMATION OF MEETING MINUTES – 5 DECEMBER 2012

The minutes of the Board's ordinary meeting of 5 December 2012 are **attached**.

STAFF RECOMMENDATION

That the minutes of the Board's ordinary meeting be confirmed.

3. DEPUTATIONS BY APPOINTMENT

4. PRESENTATION OF PETITIONS

5. NOTICES OF MOTION

6. CORRESPONDENCE

6.1 PAT MCINTOSH

Correspondence from Dr Pat McIntosh has been circulated to Board members under separate cover.

6.2 GLEN AND DI PERCASKEY

Correspondence from Glen and Di Percaskey, on behalf of others, has been circulated to Board members under separate cover.

7. BRIEFINGS

7.1 CANTERBURY EARTHQUAKE RECOVERY AUTHORITY - OPERATIONS

Baden Ewart, Deputy General Manager Operations at the Canterbury Earthquake Recovery Authority will provide a briefing to the Board on the demolition process under the Canterbury Earthquake Recovery Act.

HAGLEY/FERRYMEAD COMMUNITY BOARD
5 DECEMBER 2012

**Minutes of a meeting of the Hagley/Ferrymead Community Board
held on Wednesday 5 December 2012 at 3pm in the Board Room,
Woolston Club, 43 Hargood Street, Woolston, Christchurch.**

PRESENT: Bob Todd (Chairperson), Islay McLeod (Deputy Chairperson), Tim Carter, David Cox, Yani Johanson, Brenda Lowe-Johnson and Nathan Ryan.

APOLOGIES Brenda Lowe-Johnson arrived at 3.08pm and was absent for Clause 10 and part of Clause 2.

Apologies for lateness were received and accepted from Tim Carter and Yani Johanson, who arrived at 3.09pm and were absent for Clause 10 and part of Clause 2.

PART A - MATTERS REQUIRING A COUNCIL DECISION

1. ROAD LEGALISATION – SHUTTLE DRIVE

The Board considered a report seeking its recommendation to the Council pursuant to Section 52 of the Public Works Act 1981, to declare the existing section of land, comprising an area of 5,000m² forming part of Pt Lot 3 DP21264 and Lot 1 DP54443 (Title CB32B/102) together with an area of 5,210m² forming part of Lot 2 DP54443 (Title CB32B/103) as a road.

STAFF RECOMMENDATION

That the Council pursuant to Section 52 of the Public Works Act 1981 declare these sections of land comprising an area of 5,000m² forming part of Pt Lot 3 DP21264, and Lot 1 DP54443 (Title CB32B/102) together with an area of 5,210m² forming part of Lot 2 DP54443 (Title CB32B/103) as road.

BOARD RECOMMENDATION

It was **decided** on the motion of Nathan Ryan, seconded by David Cox, that the Board recommend to the Council that the staff recommendation be adopted.

PART B - REPORTS FOR INFORMATION

2. DEPUTATIONS BY APPOINTMENT

2.1 STATISTICS NEW ZEALAND – 2013 CENSUS

The Board **received** a deputation and presentation from Nikki Hawkey, Community Engagement Manger for the 2013 Census, on what the census means for local communities, working together to ensure community involvement and on recruitment opportunities for Census staff.

The Board Chairperson thanked Nikki Hawkey for her deputation to the Board.

3. PRESENTATION OF PETITIONS

Nil.

ATTACHMENT 1 TO CLAUSE 2 CONT'D

4. NOTICES OF MOTION

Nil.

5. CORRESPONDENCE

5.1 KEEP OUR ASSETS-CHRISTCHURCH

The Board **received** correspondence from Murray Horton, Convenor of Keep Our Assets–Christchurch requesting support from the Board for the continued public ownership of New Zealand’s strategic assets and continued Council ownership of its metropolitan and regional strategic assets.

The Board **decided** to receive the correspondence, and to take the request relating to ownership of strategic assets into consideration as necessary.

5.2 HEATHCOTE VALLEY COMMUNITY ASSOCIATION

The Board **received** correspondence from Sara Templeton, President Heathcote Valley Community Association regarding communities facilities in Heathcote and community board involvement.

The Board **decided** that the Board Chairperson respond to the letter and accept, on behalf of available Board members, the invitation to attend the Heathcote Valley Community Association meeting in January 2013.

The Board **requested** information from staff on Council related activity in Heathcote.

5.3 HON GERRY BROWNLEE

The Board **received** correspondence from Hon Gerry Brownlee acknowledging the Board’s letter of 11 September regarding the Christchurch Central Recovery Plan.

5.4 SUMNER SURF CLUB INC

Correspondence was tabled from the Sumner Surf Life Saving Club Inc seeking support from the Board for their funding application to the Christchurch Earthquake Mayoral Relief Fund for \$200,000 towards the rebuilding of their clubrooms. Board members were advised that this application would be considered at the Council meeting on 6 December 2012.

It was **decided** on the motion of Brenda Lowe-Johnson, seconded by Islay McLeod, that the Board **receive** the correspondence from the Sumner Surf Life Saving Club Inc and ask the Councillors to represent the Board’s support for the Club’s full application of \$200,000 to the Christchurch Earthquake Mayoral Relief Fund at the Council meeting on 6 December 2012.

(**Note:** Bob Todd and David Cox declared conflicts of interest, and Islay McLeod took the Chair for consideration of the correspondence from the Sumner Surf Club Inc.)

6. BRIEFINGS

Nil.

ATTACHMENT 1 TO CLAUSE 2 CONT'D

7. COMMUNITY BOARD ADVISER'S UPDATE

- The Board **received** information from the Community Board Adviser on Board-related activities including upcoming meetings, the Board meeting schedule for 2013 meetings, current consultations and the Council October Update of Current Projects.
- Board members were advised that a letter of acknowledgement has been received from the Office of the Minister of Education in response to the Board's letter supporting schools that requested additional time to consult on the proposals included in the Greater Christchurch Education Renewal Plan. Letters of support from the Board were requested and provided to Linwood Avenue School, Linwood Intermediate School, Phillipstown School, Richmond School and Woolston School.

8. QUESTIONS UNDER STANDING ORDERS

Nil.

9. BOARD MEMBERS' INFORMATION EXCHANGE

- The Board **requested** briefings from Council staff on the Avon River Park and Metropolitan Sports Facility.
- Board members discussed Council facilities, and were advised that the Council would be considering a report on the Facilities Rebuild Plan including the top 30 priority facilities at its meeting on 6 December 2012.

PART C – REPORT ON DELEGATED DECISIONS TAKEN BY THE BOARD

10. CONFIRMATION OF MEETING MINUTES – 14 NOVEMBER 2012

It was **resolved** on the motion of Islay McLeod, seconded by David Cox, that the minutes of the Board's ordinary meeting of 14 November 2012 be confirmed.

11. VICTORIA STREET – PROPOSED NIGHT TIME TAXI STANDS

The Board considered a report seeking approval that a Night Time Only Taxi Stand be installed on the east side of Victoria Street.

It was **resolved** on the motion of David Cox, seconded by Brenda Lowe-Johnson, that a Taxi Stand be installed in the daytime metered parking spaces on the east side of Victoria Street commencing at a point 203 metres south-east of its intersection with Bealey Avenue and extending in a south easterly direction for a distance of 24 metres. The taxi stand to apply from 9pm to 8am Monday to Sunday.

12. MATLOCK STREET/RANDOLPH STREET AND MATLOCK STREET/MACKWORTH STREET INTERSECTIONS – PROPOSED STOP CONTROLS

The Board considered a report seeking approval to change the existing traffic control devices at the intersection of Matlock Street and Randolph Street, and the intersection of Matlock Street and Mackworth Street.

ATTACHMENT 1 TO CLAUSE 2 CONT'D

12 Cont'd

It was **resolved** on the motion of Tim Carter, seconded by Bob Todd, that the Board:

- (a) Revoke the following at the intersection of Matlock Street with Randolph Street:
 - (i) The Give Way Control on the western approach of Matlock Street to Randolph Street
 - (ii) The Give Way Control on the southern approach of Randolph Street to Matlock Street
 - (iii) The Give Way Control on the northern approach of Randolph Street to Matlock Street.
- (b) Revoke the following at the intersection of Matlock Street with Mackworth Street:
 - (i) The Give Way Control on the western approach of Matlock Street to Mackworth Street
 - (ii) The Give Way Control on the eastern approach of Matlock Street to Mackworth Street.
- (c) Install the following at the intersection of Matlock Street with Randolph Street:
 - (i) That a Stop Control be installed on Randolph Street on its southern approach to its intersection with Matlock Street
 - (ii) That a Stop Control be installed on Randolph Street on its northern approach to its intersection with Matlock Street.
- (d) Install the following at the intersection of Matlock Street with Mackworth Street:
 - (i) That a Stop Control be installed on Matlock Street on its western approach to its intersection with Mackworth Street
 - (ii) That a Stop Control be installed on Matlock Street on its eastern approach to its intersection with Mackworth Street.

13. MAJOR HORN BROOK ROAD – PROPOSED NO STOPPING

The Board considered a report seeking approval to install no stopping restrictions on Major Hornbrook Road.

It was **resolved** on the motion of Tim Carter, seconded by Bob Todd, that the Board approve that the stopping of vehicles be prohibited on the eastern side of Major Hornbrook Road commencing at a point 93 metres north from its intersection with Billy's Track and extending in a northerly direction for a distance of 48 metres.

14. APPLICATION TO HAGLEY/FERRYMEAD COMMUNITY BOARD 2012/13 DISCRETIONARY RESPONSE FUND – LINFIELD CULTURAL RECREATIONAL SPORTS CLUB INC

The Board considered a report seeking approval of an application for funding to the Hagley/Ferrymead Community Board 2012/13 Discretionary Response Fund from Linfield Cultural Recreational Sports Club Inc.

It was **resolved** on the motion of Bob Todd, seconded by David Cox, that the Hagley/Ferrymead Community Board approve a grant of \$3,500 from the 2012/13 Discretionary Response Fund to the Linfield Cultural Recreational Sports Club Inc. towards wages for the Linfield KiwiSport coordinator.

ATTACHMENT 1 TO CLAUSE 2 CONT'D

15. APPLICATION TO THE HAGLEY/FERRYMEAD COMMUNITY BOARD 2012/13 YOUTH DEVELOPMENT SCHEME – EMMA ROSE DANTZER KLOSS

The Board considered a report seeking approval of an application for funding to the Hagley/Ferrymead Community Board 2012/13 Youth Development Scheme from Emma Rose Dantzer Kloss.

It was **resolved** on the motion of Tim Carter, seconded by Bob Todd, that the Hagley/Ferrymead Community Board support the application and allocate \$250 from the 2012/13 Youth Development Scheme fund to Emma Rose Dantzer Kloss as a contribution towards representing Canterbury at the International Friendship Ice Hockey tournament in Aldergrove British Columbia, Canada in March 2013.

16. APPLICATION TO THE HAGLEY/FERRYMEAD COMMUNITY BOARD 2012/13 YOUTH DEVELOPMENT SCHEME – HARRISON LOUIE KNIGHT AND DANIEL THOMAS HITCHENS

The Board considered a report seeking approval of an application for funding to the Hagley/Ferrymead Community Board 2012/13 Youth Development Scheme from Harrison Louie Knight and Daniel Thomas Hitchens.

It was **resolved** on the motion of Yani Johanson, seconded by Tim Carter, that the Hagley/Ferrymead Community Board support the application and allocate \$250 each from the 2012/13 Youth Development Scheme fund to Harrison Louie Knight and Daniel Thomas Hitchens towards music lessons in New York City in December 2012.

The Board Chairperson thanked Board members and staff for their attendance and contributions and declared the meeting closed at 5.14pm.

CONFIRMED THIS 19TH DAY OF DECEMBER 2013

**BOB TODD
CHAIRPERSON**

8. 724 GLOUCESTER STREET – PROPOSED PARKING AND BUS STOP RESTRICTIONS

General Manager responsible:	General Manager City Environment Group, DDI 941 8608
Officer responsible:	Transport and Greenspace Unit Manager
Author:	Steve Hughes, Network Engineer

PURPOSE OF REPORT

1. The purpose of this report is to seek the Hagley/Ferrymead Community Board's approval to install an area of 10 minute parking restrictions on Gloucester Street and to extend an adjacent bus stop.

EXECUTIVE SUMMARY

2. Council staff have received a request from City Express Discounter, a convenience store at 724 Gloucester Street, to change the existing 30 minute parking restriction outside their shop to 10 minute parking applying at any time (refer **Attachment 1**).
3. City Express Discounter is on the east side of Gloucester Street, north of the intersection with Woodham Road. It has only recently opened at this location. Previously the building was occupied by a hairdressers and a Post Shop. There is one other commercial property on this side of Gloucester Street. The entry into this property, which is currently empty, is off Woodham Road.
4. Currently there are 27 metres of no stopping restrictions extending north from Woodham Road to the southern edge of the shop. A 14 metre long area of 30 minute parking extends north across the front of the shop. Immediately north of this restricted parking area there is a 15 metre long bus stop.
5. The 30 minute time limit was appropriate for the previous businesses, but is not suitable for the convenience store. A typical customer to the store spends less than 10 minutes in the shop. Changing the parking area outside to a 10 minute limit would make the two parking spaces available to the greatest number of customers. As the convenience store opens early and closes late, this restriction should apply at any time.
6. The existing 15 metre long bus stop extends over two vehicle entrances and partway across the front of 728 Gloucester Street. As this stop is only on the one route, and the bus only stops briefly, this causes no problems. Extending this bus stop north for six metres will provide a bus stop that will not extend over any other vehicles entrances, will not extend in front of any other properties, is still close to the existing signs and seats as well as the boarding platform over the dish channel, and is easier for drivers to get into and out of. Should the kerb and channel be upgraded in the future, and should this badly damaged commercial area be redeveloped, the position will be re-assessed.
7. There are several hundred metres of unrestricted parking on both sides of Gloucester Street north of this location that can be used for the long term parking of vehicles.
8. No consultation has been done in regards to this new restriction due to it being directly outside the convenience store, and due to it being a change in the time limit and application times for an existing area of restriction.
9. The occupant of 728 Gloucester Street, outside which the existing bus stop extends partly across the front of the property, has no objection to it being extended across the full frontage.

FINANCIAL IMPLICATIONS

10. The estimated cost of replacing the two signs and painting the extended bus stop markings is approximately \$300.

8 Cont'd

Do the Recommendations of this Report Align with 2009-19 LTCCP budgets?

11. The installation of signs and road markings are covered by Transport and Greenspace Operational budgets.

LEGAL CONSIDERATIONS

12. Part 1, Clause 5 of the Christchurch City Council Traffic and Parking Bylaw 2008 provides Council with the authority to install parking restrictions by resolution.
13. The Community Boards have delegated authority from the Council to exercise the delegations as set out in the Register of Delegations. The list of delegations for the Community Boards includes the resolution of parking restrictions and traffic control devices.
14. The installation of any parking restriction signs and/or markings must comply with the Land Transport Rule: Traffic Control Devices 2004.

Have you considered the legal implications of the issue under consideration?

15. As above.

ALIGNMENT WITH LTCCP AND ACTIVITY MANAGEMENT PLANS

16. Aligns with the Streets and Transport activities by contributing to the Council's Community Outcomes – Parking, business development and public transport.

Do the recommendations of this report support a level of service or project in the 2009-19 LTCCP?

17. As above.

ALIGNMENT WITH STRATEGIES

18. The recommendations align with Council strategies including the current Parking Strategy, the Public Transport Strategy, and the Christchurch Economic Development Strategy.

Do the recommendations align with the Council's strategies?

19. As above.

Consultation Fulfilment

20. Consultation was done with the occupant of the 728 Gloucester Street, which is the property adjacent to the existing bus stop. The occupant has no objection to the bus stop being extended across the full frontage of the property. There was no consultation done in regard to changing the maximum parking time limit, as it is a change to an existing time limited parking area, the request came from the adjacent business, and no other business or property is being affected.

STAFF RECOMMENDATION

It is recommended that the Hagley/Ferrymead Community Board:

Revoke the following:

- (a) Any existing parking restrictions, including bus stops, on the east side of Gloucester Street commencing at a point 27 metres north from its intersection with Woodham Road and extending in a northerly direction for a distance of 35 metres.

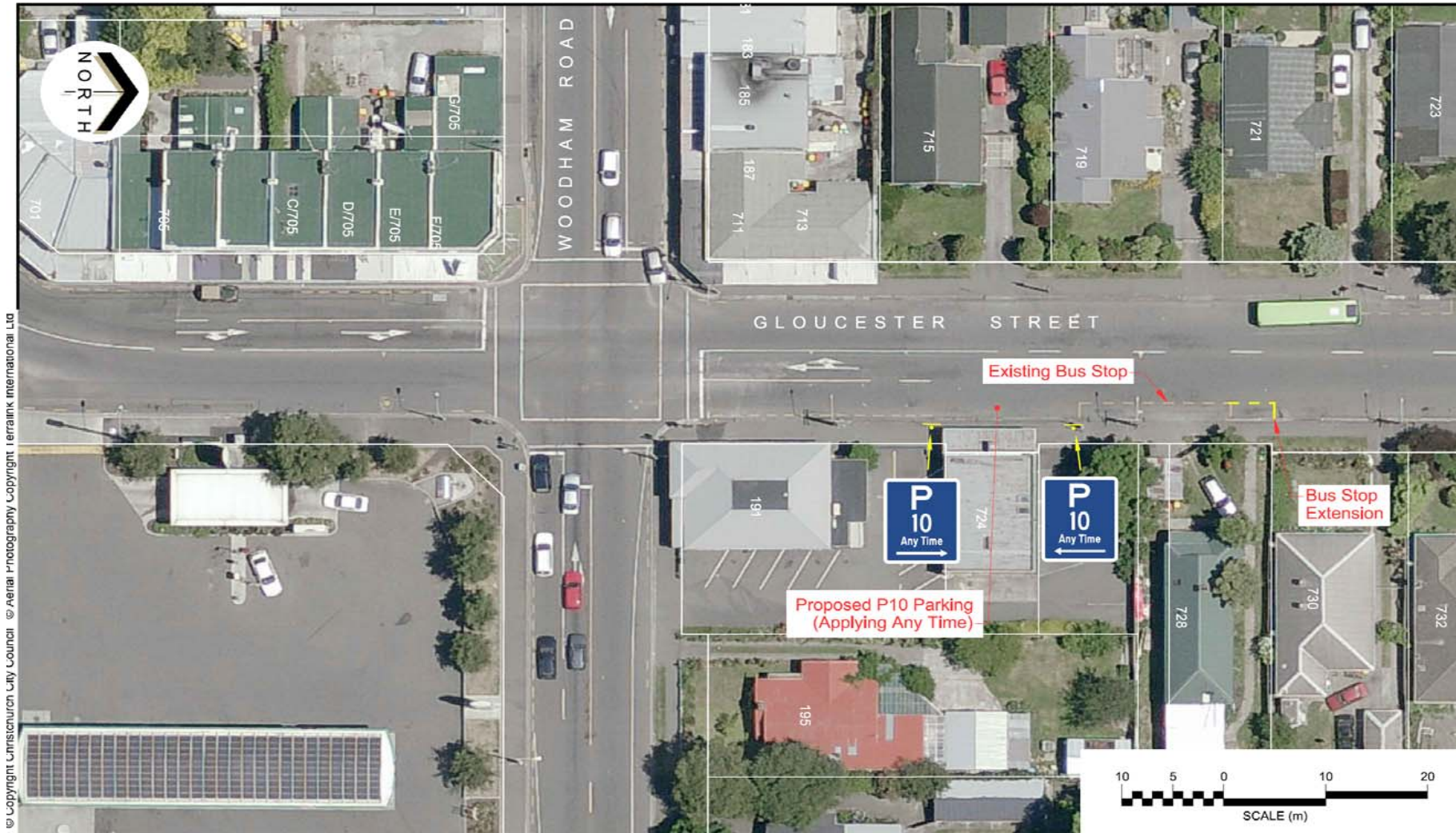
8 Cont'd

Approve the following:

- (b) That the parking of vehicles be restricted to a maximum period of 10 minutes on the east side of Gloucester Street commencing at a point 27 metres north from its intersection with Woodham Road and extending in a northerly direction for a distance of 14 metres. This restriction is to apply at any time.
- (c) That a Bus Stop be installed on the east side of Gloucester Street commencing at a point 41 metres north of its intersection with Woodham Road and extending in a northerly direction for a distance of 21 metres.

CHAIRPERSON'S RECOMMENDATION

That the staff recommendation be adopted.



© Copyright Christchurch City Council © Aerial Photography Copyright Terralink International Ltd



Gloucester Street
 Proposed P10 Parking
 For Board Approval

Original Plan Size: A4
 ISSUE.1 20/11/12
 TG123818 JEP

9. MAIN ROAD AND AUGUSTA STREET – REPORT ON INSTALLATION AND FUNDING OF TRAFFIC SIGNALS

General Manager responsible:	General Manager City Environment, DDI 941 8608
Officer responsible:	Unit Manager Transport and Greenspace
Author:	Steve Hughes, Network Engineer

PURPOSE OF REPORT

1. This report is in response to a request from the Hagley/Ferrymead Community Board for an urgent report on the installation of traffic signals at the Main Road and Augusta Street intersection, including options for funding and alternative sources.

EXECUTIVE SUMMARY

Signalisation of the Intersection.

2. There are no plans to install traffic signals at the intersection of Main Road and Augusta Street.
3. Signalisation of the intersection was considered when raised by Foodstuffs South Island Limited (Foodstuffs) as part of their Resource Consent application to build a supermarket near this intersection.
4. After reviewing the data contained in the application, staff accepted Foodstuffs' conclusions that the proposed construction of a larger supermarket was not anticipated to have a noticeable adverse impact on the functioning of the Main Road/Augusta Street intersection and that signalising of the intersection was therefore not warranted.
5. The Council based its decision on information supplied by Foodstuffs in an Integrated Transport Assessment (ITA) where it concluded that the intersection would operate within acceptable operating limits, and that while signalising the intersection may reduce delays for traffic exiting from Augusta Street during the busiest periods, as these periods would only occur mid-afternoon on a summer Sunday, this represented less than 0.5% of the year. For the remaining 99.5% of the year the intersection would not warrant signalisation.
6. In spite of initially arguing that signalisation of the intersection was not required, in May 2012 Foodstuffs made a submission to the Draft Annual Plan for Council to fund the signalisation of the intersection for "the benefit of the community. It is recorded that there is no provision for doing so in the current Long Term Plan (LTP), that a review of intersection priorities could be undertaken at future LTP updates, and that no change be made to the Draft Annual Plan 2012/2013.
7. The Council commissioned an independent Cost Benefit Analysis (CBA) of signalising the intersection. The resulting mid-field figure of 2.0, (where 1.0 is low and unlikely to be done and 4.0 is high priority) means that there may be overall benefits in dollar terms, albeit slight, in signalising this intersection.

Expected Costs

8. The estimated cost of installing traffic signals at this intersection is between \$435,000 and \$540,000. In addition to installing the signals, alterations to kerbing, drainage, lighting, footpaths, installing traffic management and removing the existing upgraded pedestrian crossing would be required.

Capital Projects Funding in 2013-22 LTP

9. Council staff visited Community Boards several months ago requesting they advise projects they wanted to be included for funding in the 2013–22 LTP. The August 2012 response from the Board did not include the signalising of this intersection.

9 Cont'd

10. There are approximately 30 intersections throughout Christchurch currently competing for funding in the 2013-22 LTP. It is too late for this intersection to be included in this list. The next opportunity for the Board to seek funding will be in the 2015–24 LTP where it will compete against similar projects for funding.
11. Should the Board believe that it is essential to signalise this intersection, in addition to applying via future LTP's they might consider making a contribution from the Boards Discretionary Response Funds or seeking funding from the following alternative sources.

Possible Funding Options (Alternative Sources)

Other Budgets

12. There is no other funding specifically allocated outside of the LTP to signalise this intersection.
13. It is possible that some funds may be available from other Council budgets; however the amount available is a fraction of the amount required.

Foodstuffs and other Redcliff Business Contributions

14. Given that Foodstuffs have now indicated that they will not build a supermarket unless the intersection is signalised, Foodstuffs and/or other Redcliffs businesses could make up the shortfall.
15. However this could reduce the effectiveness of the Councils prioritisation process to ensure that the most deserving projects are dealt with first.

New Zealand Transport Agency

16. Should the Council be able to part fund the cost of signalising this intersection from other budgets or sources, and should there still be a shortfall, an application could be made to the New Zealand Transport Agency for contributory. It has however been indicated that with the reduction in population of the area, the reduction in traffic flows along Main Road, evidence that signalisation is not required in the foreseeable future, and the low to medium CBA, an application is unlikely to succeed.

Stronger Christchurch Infrastructure Rebuild Team (SCIRT)

17. SCIRT will be repairing the roads and footpath in this area in 2013. While there are simple traffic improvements that can be incorporated into this repair, any major work undertaken such as signalisation of this intersection would be at the request of and funded by the Council. As previously mentioned, there is currently no funding allocated to do so.

FINANCIAL IMPLICATIONS

18. This report relates to information only, there are no costs associated with accepting this report.

Do the Recommendations of this Report Align with 2009-19 LTP budgets?

19. See above.

LEGAL CONSIDERATIONS

Have you considered the legal implications of the issue under consideration?

20. This report is for information only. Community Boards do not have delegated authority to install traffic signals.

9 Cont'd

ALIGNMENT WITH LTP AND ACTIVITY MANAGEMENT PLANS

21. Not applicable.

Do the recommendations of this report support a level of service or project in the 2009-19 LTP?

22. As above.

ALIGNMENT WITH STRATEGIES

23. Not applicable.

Do the recommendations align with the Council's Strategies?

24. As above.

CONSULTATION FULFILMENT

25. Not applicable.

STAFF RECOMMENDATION

It is recommended that the Hagley/Ferrymead Community Board receive this report.

CHAIRPERSON'S RECOMMENDATION

For discussion.

10. COMMUNITY BOARD ADVISER'S UPDATE

10.1 Council November 2012 Update of Current Projects (refer **attached**).

11. QUESTIONS UNDER STANDING ORDERS

12. BOARD MEMBERS' INFORMATION EXCHANGE

council UPDATE

November 2012 UPDATE OF CURRENT PROJECTS FOR ELECTED MEMBERS FROM CHIEF EXECUTIVE TONY MARRYATT

GENERAL INFORMATION

Stronger Christchurch Infrastructure Rebuild

On 1 November the Canterbury Earthquake Recovery Minister announced the SCIRT training and recruitment programme to attract workers into the trade industries needed for the horizontal rebuild. The "Train, Work, Earn, For Real" campaign has been designed to help attract 900 new workers to the infrastructure rebuild over the next 12 months. SCIRT, assisted by a number of industry providers and work place tutors, will provide new industry entrants with paid for training ranging from 6-14 weeks, on the job retraining for appropriate applicants who are currently employed and on-going training whilst in employment for both these groups of people. A "For Real" bus was used to promote the recruitment and training initiative throughout the South Island, with a packed schedule in November including the A&P show.

Delivery in the field has continued to ramp up over the past month, with output doubling over a four-month period. This will continue to increase into the New Year and, with the increase in work in the field, there is an ongoing focus on quality and safety over the next few months.

Council and SCIRT staff continue to visit Community Boards to keep them updated about progress in their areas, including providing information on the new prioritised schedule. Very positive feedback, with regards to the infrastructure rebuild communications, was a common theme from each of the boards. This has also been reflected in the independent market research, undertaken every six months, indicating an average customer satisfaction with communication of 81% overall. New website functionality that will enable people to search for specific projects close to a particular address is nearly complete.

The overall updated horizontal infrastructure estimate is currently undergoing internal review with the client organisations with a view to having it finalised to inform the LTP planning process and relevant CERA appropriations.

Sumner Road

Sumner Road (the road from Lyttelton to the summit at Evans Pass) remains closed due to the impacts of significant rockfall as a result of the earthquakes. As reported last month, several options for re-opening Sumner Road are being developed. The options principally involve varying levels of rock stabilisation and removal to lessen the risk of further rock fall in the event of future significant seismic events.

Ferrymead Bridge

As reported last month, the detailed design of the new bridge has proven complex due to site conditions. Work continues on the construction of the approaches for the temporary bridges, with work on schedule to divert traffic to the temporary bridges by mid-January 2013 and demolition to begin later that month on the existing bridge.

Building Consents - Commercial Rebuilds

The total value of work for major commercial building consents (worth over \$1 million each) issued in the city has increased \$381.2 million over a 35 week period.

The figures include 119 projects which have been granted building consent, and range from repairs to new builds, and existing customers being granted further building consents for the next stage in their project.

Twenty-seven of the projects are within the Four Avenues. The value of work for these building consents is \$130.3 million.

Resource Consents

- Ninety-nine per cent of all resource consent applications are processed within statutory timeframes. This is linked to receiving, processing and issuing over 90 per cent of resource consent applications electronically.
- More complete applications are being submitted. The number of applications where further information was requested reduced from 41 percent in February to 28 per cent in September.
- More than 500 temporary accommodation permits have been issued since 22 February 2011 helping displaced businesses to get going.
- During July to September 458 resource consents were granted – many of these were for large developments or new Greenfield (formerly agricultural or amenity land) subdivisions. Since the start of the financial year (from July) applications for this type of resource consent are on average 50 percent higher than the same periods for 2010-2011 and 2011-2012.

Suburban Centres Programme

Consultation on the Draft Sumner Village Centre Master Plan was held from 8 November until 12 December. The Draft New Brighton Centre Master Plan was considered by the Burwood / Pegasus Community Board on 3 December and then to Council on 6 December for approval to consult. Case management continues in all earthquake-affected suburban commercial centres. The status of master plans is as follows:

- Lyttelton Master Plans – work continues on preparing project plans for the initial implementation projects. Implementation projects underway in Lyttelton included a community workshop on 17 November to help inform the drafting of Lyttelton's Community Emergency Action Plan. Staff are exploring options for involving the community in possible future design of street furniture, play equipment, public artwork and lighting for the new civic square site made possible by transitional project funding.
- Sydenham Master Plans – implementation projects and actions underway in Sydenham include the provision of draft design guidance for developers; development of several options for discussion for the Buchan Park remodel; investigating temporary landscapes along Colombo Street and the preparation of landscape plans for the upgrade of the pocket park at 470 Colombo Street.
- Selwyn Street Shops Master Plan – printed copies of the final Master Plan are available for the public in any open Council service centres and libraries. Discussions with land owners are continuing regarding the redevelopment of sites and an application for resource consent has recently been submitted for a new retail and commercial development.
- Linwood Village Master Plan – printed copies of the final Master Plan are available for the public in any open Council service centres and libraries. Discussions with land owners are continuing for development of a number of sites within the village centre.
- Interim Ferry Road Draft Master Plan (Phase 1) – the Draft Master Plan was approved by the Council for public comment. It will be available from Monday 28 January until Thursday 28 February 2013.
- Sumner's 'Community-led' Master Plan – consultation was held from 8 November to 12 December. Two drop-in sessions were held during the consultation period for people to view the Plan, discuss its contents with Council staff and make submissions.
- Edgware Village Master Plan – Council staff are now working on drafting the Master Plan, which is due to go to the Shirley/Papanui Community Board on 17 December and then to the Council on 14 February for approval to consult.

ATTACHMENT 1 TO CLAUSE 10.1 CONT'D

- New Brighton – an initial proof of the Draft Master Plan was presented to the Burwood/Pegasus Community Board on 3 December and approved by Council on 6 December. It will be released for public comment on 17 December – 18 February 2013.

Council Facilities Rebuild Plan

The first of the Council's top 30 projects that in September were prioritised for funding, further investigations and, where possible, repairs have now re-opened.

The New Brighton Whale Pool and the Christchurch Botanic Gardens Paddling Pool re-opened to the public on Saturday 17 November. Mayor Bob Parker officially re-opened the Whale Pool at a special event organised by Council staff.

Investigations are continuing on the rest of the 30 priority facilities. This includes progressing engineering assessments, discussions with insurers and, looking at repair and strengthening options or, in some cases, reviewing the economics of repairing compared to demolishing a building. Reports recommending the demolition of South Brighton Community Centre and the Sumner Library were due to be considered by the Council at its 6 December meeting.

A draft prioritised programme for the non-residential facilities in the Facilities Rebuild Plan project that are not included in the Council's priority 30 list of facilities was presented to community boards for their input on 23 October. Community boards had until 9 November to provide feedback on the draft prioritised programme. The final prioritised list was approved by the Community Recreation and Culture Committee on 27 November and by Council on 6 December. This list prioritises the order in which investigations will be done on a facility, which will in turn help to inform decisions made about it. The prioritised list does not set out when a facility will be repaired or other work carried out.

Repairs have now been completed on YHA Rolleston House and the hostel was officially re-opened by the Governor General Lieutenant General Sir Jerry Mateparae on 23 November.

Christchurch City Libraries

Christchurch City Libraries has received two mobile library vans as a result of a funding application for earthquake support from Rotary New Zealand. The vans were launched in New Brighton on Saturday 1 December and were on the road from Monday 3 December. The launch coincided with the New Brighton Christmas Parade and the three-on-three basketball tournament. Both vans featured as part of the parade, and were set up for use by the public for the rest of the day. Rotary New Zealand has sought and received funding for this project, with one van funded by Rotary International, and the other van funded through a partnership with Rotary International and the Cotton On Foundation.

Christchurch Art Gallery Te Puna o Waiwhetu

The pressures placed on the personal and individual by the phenomenon of mass promotion and consumption are explored through three video works and a sculpture in James Oram's new exhibition *but it's worth it*. The exhibition is the latest in the Christchurch Art Gallery's *Rolling Maul* series and is open now until 16 December above NG, 212 Madras Street.

On Saturday 10 November Melbourne-based artist Ash Keating created *Concrete Propositions*, a huge, abstract painting on a concrete wall revealed by demolition. Paint was thrown, sprayed and fired onto a concrete wall in Worcester Street in the project where Christchurch Art Gallery joined forces again with Gap Filler to enliven the Central City.

Christchurch Southern Motorway (CSM) and Aidanfield Drive Underpass

The overall CSM project will have an official opening ceremony on 14 December 2012. This is ahead of the contract planned date of February 2013. It is anticipated that westbound traffic will be able to use the motorway under traffic management from the first week in December. There will be some post opening minor works through to February 2013.

ATTACHMENT 1 TO CLAUSE 10.1 CONT'D

Council events

New Zealand Cup and Show Week ran from Saturday 10 to Saturday 17 November. Despite unpredictable spring weather all events were well attended. A highlight for many was the attendance of The Prince of Wales and The Duchess of Cornwall at the 150th Canterbury A&P Show on Friday 16 November. The festival received strong positive media coverage leading up to and throughout New Zealand Cup and Show Week. A post event analysis and debrief is now underway.

Christchurch hosted The Prince of Wales and The Duchess of Cornwall on Friday 16 November to mark the Diamond Jubilee of Queen Elizabeth. Key events that the Council was involved in were: the mihi whakatau at the Civic Offices, meeting with 14 people who were seriously injured in the 22 February 2011 earthquake at the Civic Offices, presentation of a letter by The Prince of Wales which is to be placed in a time capsule beneath the Queen Victoria Diamond Jubilee Clock and meeting with volunteers from organisations in Christchurch that have provided services to the community in response to the Canterbury earthquakes.

Planning for Summertimes is underway. Kicking off with New Year's Eve party, it will run through January, February and March and offer free outdoor entertainment. The 2013 celebrations will include a performance of Wind in the Willows, starring Mark Hadlow as Toad, as well as Classical Sparks, Lazy Sundays, Sunday Bandstand, Tip Top Kite Day and various community-based events.

The Tretech Guy Fawkes Fireworks Spectacular returned to New Brighton Pier at 9pm on Monday 5 November. Following an initial light show at 9pm, a choreographed fireworks display courtesy of Christchurch company Firework Professionals lit up the skies over New Brighton, set to a soundtrack that will be simulcast on The Breeze 94.5FM.

Christmas on Latimer began on Saturday 8 December and will go through to Christmas Eve 2012. The festivities will include the Telecom Christmas Tree, a chance to design a light sequence and watch it play on the tree, a phone box where kids can ring the Telecom Santaline, an Enchantment Market, YMCA Carols by Candlelight, a GIANT ZM Advent Calendar (made from containers), a Christmas Eve Midnight Mass (led by the Anglican ChristChurch Cathedral). Besides the scheduled events there will be various performers, stalls and food vendors.

Summer will be heralded by the return of the Summer Pool Parties, beginning on Saturday 15 December.

Kind regards

Tony

See Appendix attached for capital projects by ward area

ATTACHMENT 1 TO CLAUSE 10.1 CONT'D

Appendix:

CAPITAL PROJECT STATUS FOR WARD AREAS
(Those not mentioned in the roundup of major projects).

(Major projects in bold).

Hagley/Ferrymead

• Test Cricket	Capital Facilities	Build
• Pioneer Learn to Swim Pool	Capital Facilities	Defects Liability
• WW Pressure Main 11 - Randolph Street	CWW	Build
• Wastewater Pump Station PS0070 - Taylors Mistake Electrical Upgrade	CWW	Build
• Wastewater Pump Station PS0010 - Linwood electrical upgrade	CWW	Build
• WW Fendalton Duplication	CWW	Build
• Digester 2-4 Refurb - Digester 3	CWW	Build
• WS St Johns New Well	CWW	Build
• WS Ferrymead Booster Station	CWW	Commissioning
• WW CWTP Odour Containment (Stage 2)	CWW	Build
• WW CWTP Electrical Instrumentation and Control Renewals	CWW	Build
• Lift Electrical Equipment to Avoid Flood	CWW	Build
• WW CWTP Ongoing Renewals Programme	CWW	Build
• Backup Power Generator	CWW	Defects Liability
• WW CWTP Allen Engines Replacement	CWW	Build
• WW WI Future Stages	CWW	Build
• Victoria Reservoirs 2 and 3 Replacement	CWW	Detailed Design
• Grit Tank Upgrade for EQ Resilience	CWW	Detailed Design
• Flare Upgrade	CWW	Detailed Design
• St John Diesel Generator Renewal	CWW	Handover
• Biosolids Holding Tank	CWW	Handover
• Wastewater Pump Station PS002 - Hereford electrical upgrade	CWW	Investigation
• Enlarge Grit Tank & Sedimentation Tank I	CWW	Investigation
• WW CWTP Secondary Treatment Upgrade	CWW	Investigation
• Wastewater Pump Station PS0012 – Smith electrical upgrade	CWW	Detailed Design
• Grit Tank Efficiency Improvements	CWW	Preliminary Design
• Biosolids Dewatering Renewal	CWW	Preliminary Design
• CWTP 5th & 6th Digester	CWW	Warranty Period
• WW CWTP Biosolids Drying Facility	CWW	Warranty Period
• Steamwharf Stream @ St Johns St	Greenspace	Build
• Ferrymead Park development	Greenspace	Build
• Heathcote Valley Reveg	Greenspace	Build
• Botanic Gardens Irrigation Renewal	Greenspace	Build
• Washington Reserve	Greenspace	Build
• Greenwood Park reveg	Greenspace	Detailed Design
• Brownlee Reserve Playground	Greenspace	Build
• Brownlee Reserve Development	Greenspace	Detailed Design
• Robert McDougal Art Gallery Strengthening	Greenspace	Investigation
• Botanic Gardens Collection Renewals	Greenspace	Investigation

ATTACHMENT 1 TO CLAUSE 10.1 CONT'D

• Mt Pleasant Barnett Gulley	Greenspace	Build
• Hagley Park Green Assets Renewal	Greenspace	Investigation
• Stormwater Pump Station PS 209 Celia upgrade	Greenspace	Detailed Design
• Botanic Gardens Entry Pavilion	Greenspace	Tender
• Botanic Gardens Boiler	Greenspace	Tender
• Botanic Gardens Tree Replacements	Greenspace	Investigation
• Hagley Park Tree Renewal Programme	Greenspace	Design
• Ferrymead Bridge	Transport	Build
• Ferry Rd/Humphreys Dr Intersection	Transport	Defects Liability
• Main Rd (3 Laning)	Transport	Detailed Design
• McCormack's Bay Culvert Bridge Renewal	Transport	Detailed Design
• Carnarvon Street Kerb and Channel Renewal	Transport	Preliminary Design
• Dacre Street Kerb and Channel Renewal	Transport	Preliminary Design
• Fitzgerald Ave Twin Bridges	Transport	Investigation
• Ferry & Moorhouse Road Widening (Aldwins to Fitzgerald)	Transport	Investigation
• Skateboard Facility – Sumner / Redcliffs	Greenspace	Investigation
• Botanic Gardens Riverbank	Greenspace	Detailed Design