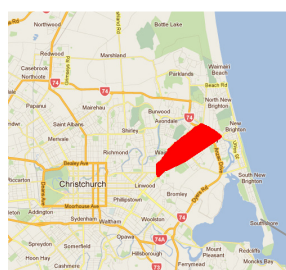


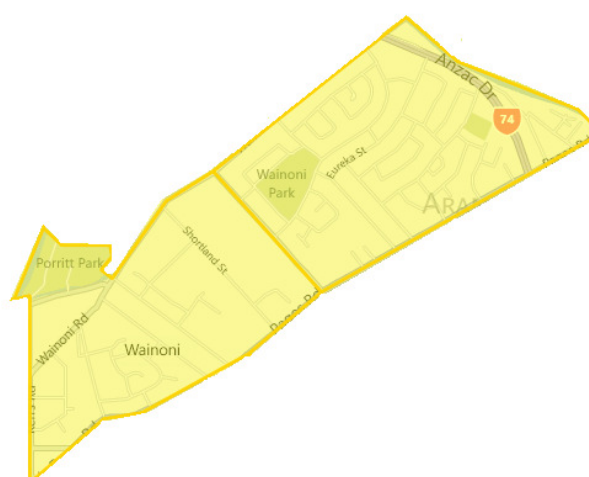
# Community profile

## Aranui/Wainoni

(Census area units: Aranui, Chisnall)



Christchurch city



Aranui is a suburb in the east of Christchurch located approximately eight kilometres from the Central Business District (CBD); Wainoni is located approximately seven kilometres from the CBD.

Aranui comes from the Maori words, Ara meaning path and Nui meaning great, and was the name given to a post office in the area in 1912 and then applied further to the greater area. The name Wainoni translates from Maori into 'the bend in water', and was the name Alexander William Bickerton (c.1842–1929) gave to his home, which was on land that includes the area known today as Wainoni.

Aranui is a low socio-economic area with a large number of state housing units. The award-winning Aranui Renewal project has been a key partnership since 2000, with three original partners: Housing New Zealand, Christchurch City Council and the Aranui community through the Aranui Community Trust. Collectively and with new community partners and developments, the partnership has supported development in the area over the last 12 years. The Aranui Community Trust (ACTIS) also acts as the sole residents' association in the area.

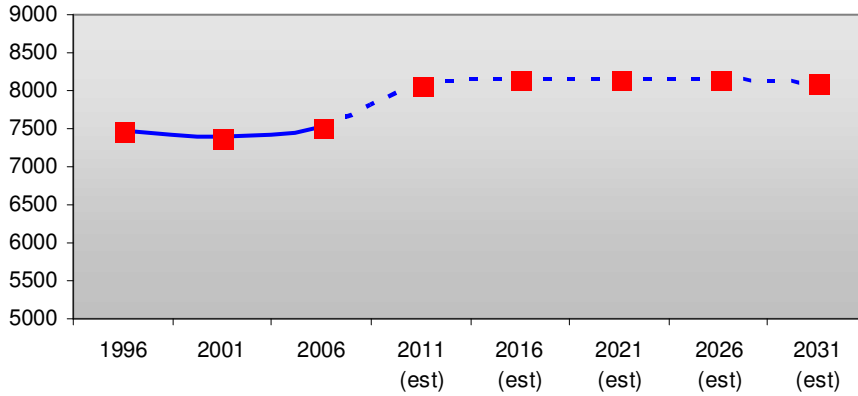
Aranui's local shops, recreation, pharmacy, community organisations and doctor can all be found on Hampshire Street. Wainoni Park hosts a local playground and is home to a large local rugby league club, the Aranui Eagles. There were three Council community facilities in the area prior to the earthquakes: one has been closed, another has been demolished, and the last one is a small, single-user group facility. Te Kete Wānanga o Aranui, the Aranui Community Library, was opened in September 2012 on Wainoni Park. QEII Park was the closest and largest sport and recreation facility to Aranui/Wainoni residents, and Porritt Park and Kerrs Reach rowing facilities are also located in the area. All facilities sustained severe damage in the earthquakes. Demolition of the QEII complex began in August 2012, and Porritt Park is in the red zone with no rebuilding plans for Canterbury Hockey. Some rowing activities have returned to Kerrs Reach in 2012, with clubs using temporary facilities from the site to service metropolitan Christchurch.

There are three primary schools and one high school in the area: Aranui Primary, St James Primary, Wainoni Primary and Aranui High School. All four schools in the area have low decile ratings. Census figures from 2006 showed that Aranui had fewer people over 65 years of age than Christchurch city, and more youth and children under the age of 19 years of age than Christchurch city.

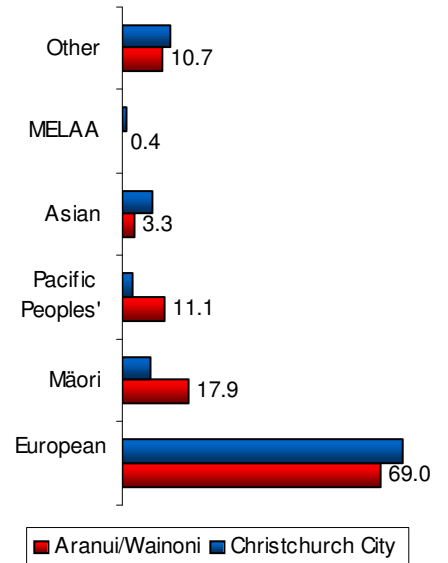
There are three medical centres, a physiotherapist and the Aranui Neighbourhood Nurse in the area. Aranui/Wainoni has a high number of churches, community service providers and other faith-based organisations, reflecting the deprivation levels, needs of the community and support available.

# Key demographics

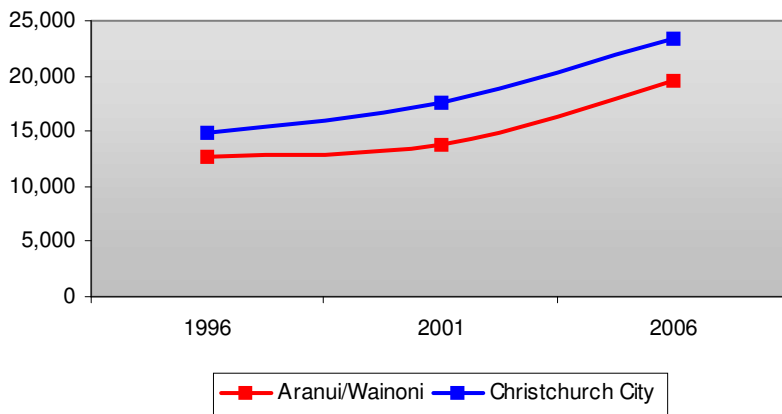
**Usually resident population count**  
Data from Statistics NZ



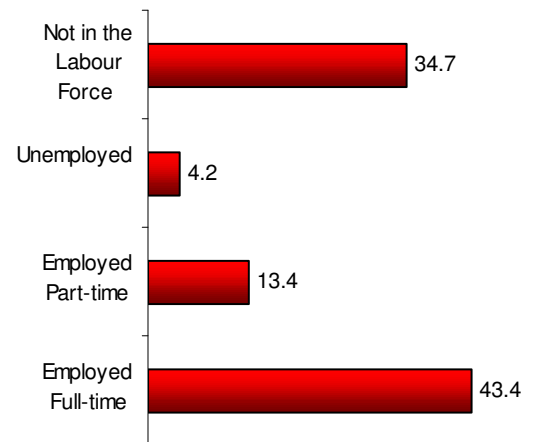
**Ethnic groups in the area (%)**  
Data from 2006 Census, Statistics NZ



**Median personal income compared to Christchurch city**  
Data from Statistics NZ



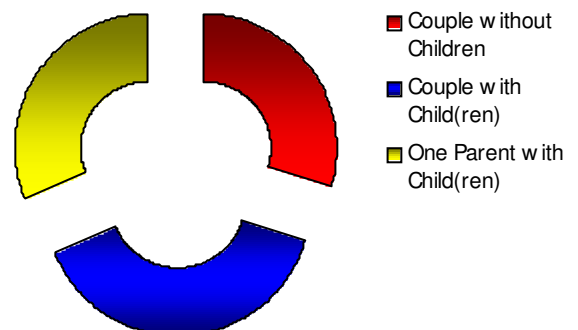
**Employment status (%)**  
Data from 2006 census, Statistics NZ



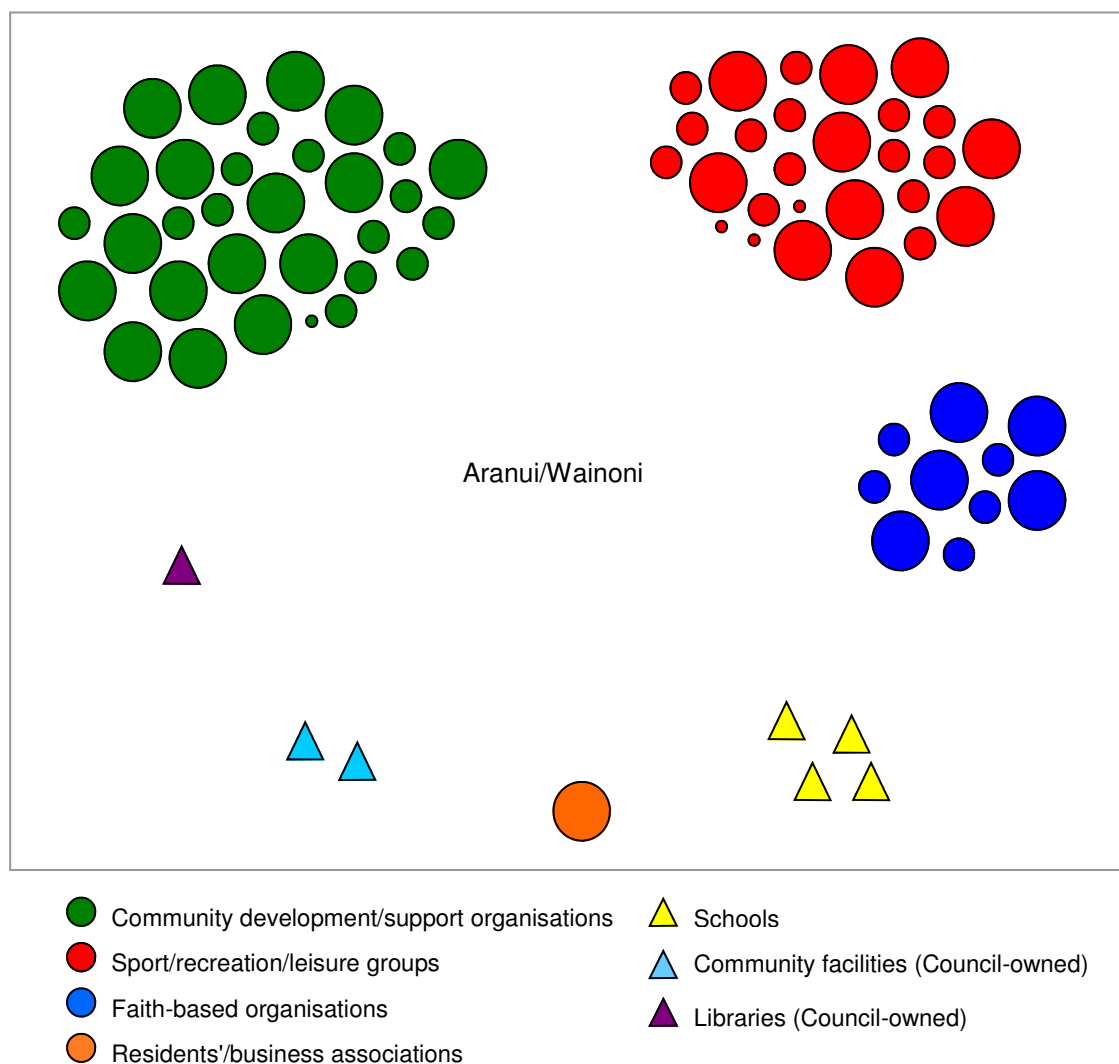
**Home ownership (%)**  
(Data from 2006 Census, Statistics NZ)



**Family type (%)**  
(Data from 2006 Census, Statistics NZ)



# Social infrastructure mapping



*The above ratings have been based on reach, diversity, and participation. For example, the bigger circles tend to be groups that provide a wider range of services, or have large numbers of participants. They also tend to be groups that are well networked within the community.*

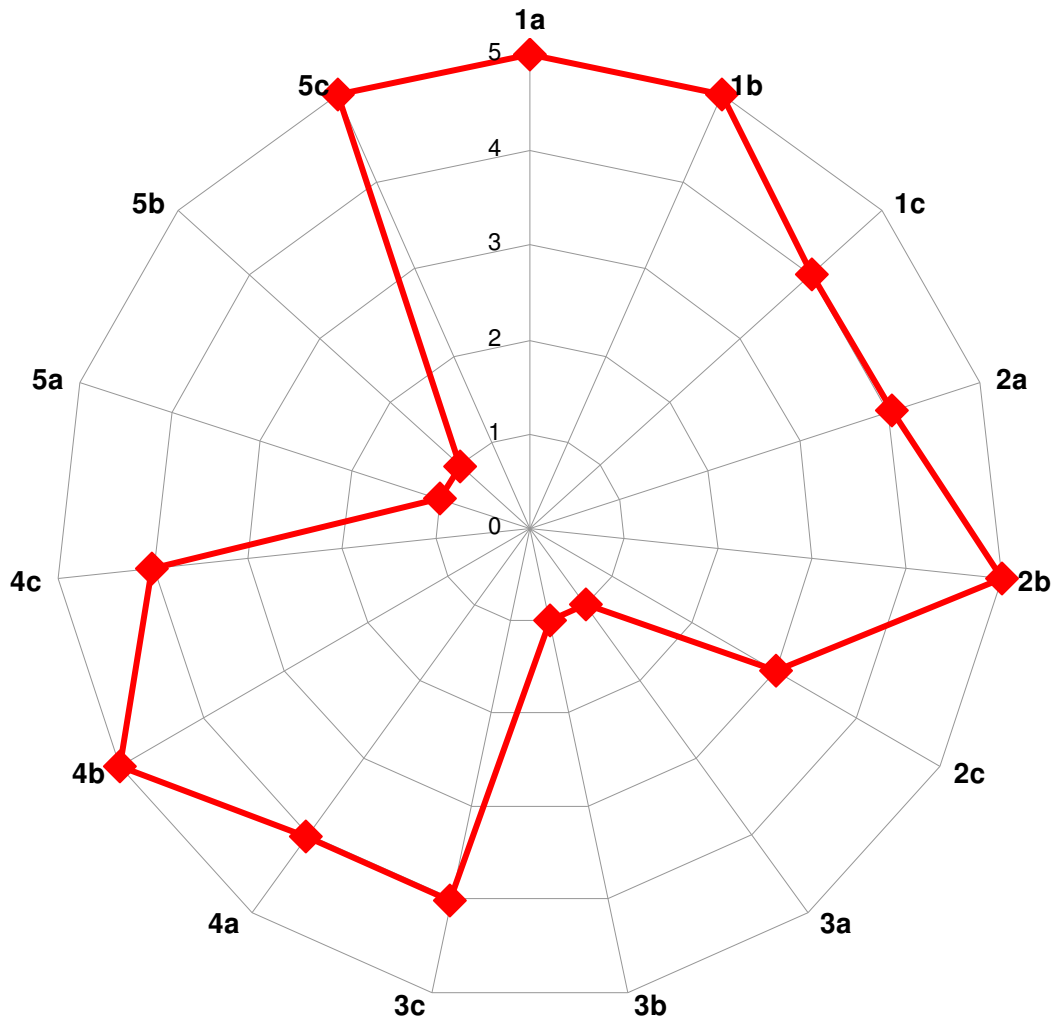
Before the earthquakes of 2010 and 2011 the Aranui /Wainoni area had three of the eight Burwood/Pegasus Council community facilities. Following the earthquakes the Aranui Community Hall was demolished, and the Wainoni/Aranui Family centre is closed due to not meeting the new building standards. The third Aranui facility is a small, windowless building used as a boxing gym and known locally as 'the bunker'.

A new Christchurch City Library opened in Aranui in September 2012. There is already high demand from the community for use of the community meeting/recreation space available in this facility.

A national youth organisation working in Linwood and Aranui since February 2011 is looking to establish itself permanently in Christchurch. It has facilities throughout New Zealand with programmes focused on youth needs. Youth programme numbers are slowly building and the organisation is currently looking for land on which to build a facility.

The area has a relatively high number of churches, community service providers and other faith-based organisations. This is partly in response to the deprivation levels and needs of the community, but also indicates the support networks available. Many of these organisations were connected prior to the earthquakes, but are now even more aware of each other and in touch, particularly as community demand for services increases.

# Community resilience mapping

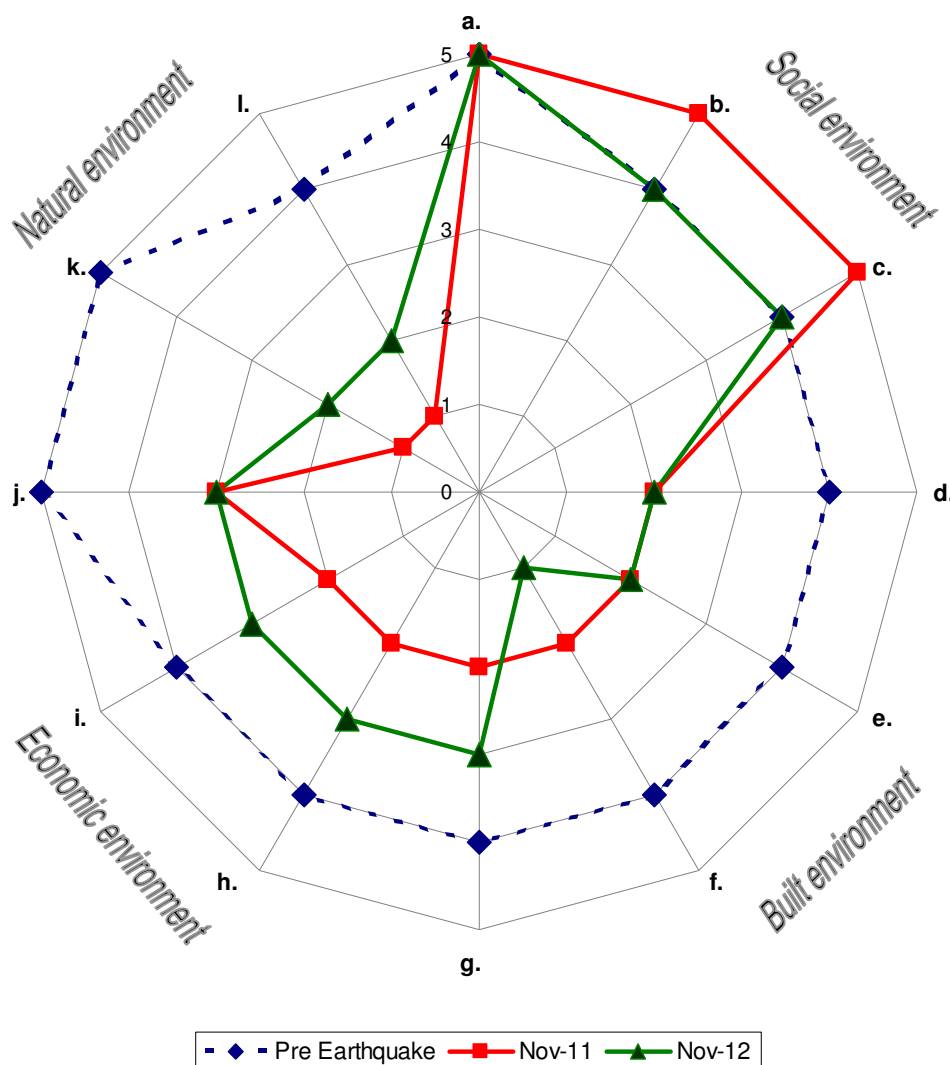


Scale: 1 = Low 5 = High

## 15 measures of resilience

<p><b>Community development organisations</b> rating</p> <p><b>1a</b> Number of organisations (5)</p> <p><b>1b</b> Strength of organisations (5)</p> <p><b>1c</b> Community development principles (4)</p>	<p><b>Volunteering</b> rating</p> <p><b>2a</b> Investment in volunteers (4)</p> <p><b>2b</b> Number of volunteer hours (funded groups) (5)</p> <p><b>2c</b> Number of people volunteering from Census (3)</p>
<p><b>Connectedness</b> rating</p> <p><b>3a</b> Number of neighbourhood support groups (1)</p> <p><b>3b</b> Number of residents' associations (1)</p> <p><b>3c</b> Access to networking groups/forums (4)</p>	<p><b>Participation</b> rating</p> <p><b>4a</b> Community events (4)</p> <p><b>4b</b> Funded projects participation rates (5)</p> <p><b>4c</b> Club membership numbers (4)</p>
<p><b>Preparedness</b> rating</p> <p><b>5a</b> Number of neighbourhood support groups (1)</p> <p><b>5b</b> Households involved in neighbourhood support (1)</p> <p><b>5c</b> Capability of groups to lead local response (5)</p>	

# Earthquake impact analysis



	Pre Sep 2010	Nov 2011	Nov 2012
<b>Social environment</b>			
a. Community organisations	5	5	5
b. Community connectedness	4	5	4
c. Community participation	4	5	4
<b>Built environment</b>			
d. Housing stock	4	2	2
e. Rooding infrastructure	4	2	2
f. Community facilities	4	2	1
<b>Economic environment</b>			
g. Local business/services	4	2	3
h. Access to local services	4	2	3
i. Local economy	4	2	3
<b>Natural environment</b>			
j. Land condition	5	3	3
k. Parks and spaces	5	1	2
l. Accessibility to natural environment	4	1	2

# Community environment

## Social environment

Aranui features at a high level in many concerning statistics around unemployment, low wage earning and low qualifications. Census statistics from 2006 has the unemployment rate in Aranui at nine per cent, compared with four per cent for the Canterbury region. The earthquakes further compounded these issues, with many residents being caught out not having the money to buy essentials, food and water. The flip side of this is the number of service organisations in the area which provided a strong basis for community support at the time. Offers of support and funding were initially provided to schools, churches and other organisations. These organisations worked hard post-earthquakes, co-ordinating food banks, emergency housing repairs and general support for residents in Aranui and surrounding areas. Wainoni saw a key organisation providing information, support and, later on, speakers on all topics related to earthquake issues.

Organisations in general have worked more closely together enhancing services, but the depth of need and the increase for particular support such as budgeting advice and food parcels has pushed many organisations beyond their capacity and resources. Goodwill from other sources has all but stopped, pushing many volunteers even further towards burnout, as many may be facing earthquake-related issues of their own, yet still feel the need to keep going. Generally, frustration levels are higher and more health and behavioural issues are presenting. There was an expectation that funding to groups would increase because of earthquake funds and supports put in place. Anecdotally, many groups are struggling and have been unable to access the earthquake funds for their regular services, let alone for any increased demand or depth of service. Ward-wide, more projects have arisen contending for the same amounts of funding, resulting in some organisations receiving less funding.

The Aranui Community Hub continues to operate from the Aranui Community Trust premises. Established after the 22 February 2011 earthquake, the hub holds a fortnightly meeting of organisations and groups working in Aranui/Wainoni. They meet to network, provide support, and collaborate on how they can work better to support the area. The Aranui Community Trust has been involved in supporting many initiatives in the area, including opening an earthquake support centre at the Hampshire Street shops, with three earthquake support co-ordinators based there.

The earthquakes saw a significant depopulation of the area which impacted on school enrolments at Aranui, Wainoni and St James Primary schools. Anecdotally, those who moved out permanently went to Auckland and Australia, with many of those who have relocated within Christchurch moving to Hornby, where there are many similar support service connections. Some people who initially moved out of Aranui after the earthquakes have been returning, but housing is limited and rents have increased. Providers of holiday programmes and after school programmes found alternative venues from which to operate, but they are concerned about the future of their programmes due to the depopulation and the impact of the red zoning of Bexley and Avondale. Sport Canterbury appointed an Active Schools co-ordinator in 2011, working with Aranui, St James, Avondale and Wainoni Primary Schools, co-ordinating a local sports tournament at Wainoni Park, and supporting local sports clubs. Membership numbers in the local rugby league club, the Aranui Eagles, have steadily increased with over seven new teams this winter (13 teams in total). A new summer children's weekly touch rugby programme was launched in October 2012 at Wainoni Park, with over 100 children participating.

Of significant interest to many in the community in late 2012 has been the Ministry of Education's Education Renewal for Greater Christchurch proposal, which affects five schools in the Aranui and immediately surrounding area. This proposal was presented as complementing and contributing to the CERA Recovery Strategy. It suggests the building of a new Year 1-13 school to replace three primary, one intermediate and one secondary school, which would all close. Consultation is set to take place from September 2012, with decisions in 2013.

## Built environment

As a result of the earthquakes the Aranui Community Hall (Breezes Road/Pages Road) was damaged and has been demolished. The Wainoni/Aranui Family Centre on Hampshire Street was also closed after failing to meet the new building standards on its detailed engineering evaluation (DEE). It is now part of the Council's facilities rebuild programme. Fortunately, many groups have found alternative space, particularly at the Aranui School Hall and City East Church on Shortland Street. Other organisations' facilities have remained relatively constant, but many have not undergone detailed evaluation. The community is currently short of facility space that will hold around or over 200 people for larger gatherings, tangis, etc. A community steering group set up in early 2011 undertook community consultation in October 2011 and is currently looking at options and partnership potential around a facility for the wider Aranui area.

# Community environment

A new Christchurch City Library opened in September 2012 next to Wainoni Park. Nga Hau e Wha Whare nui was used after the 22 February 2011 earthquake as the Christchurch District Court, and the Ministry of Pacific Island Affairs co-ordinated a Pacific Hub as an information and co-ordination centre for Pacific people. Both of these services have now moved to more permanent locations, making this space available again. Cowles Stadium was initially closed, but reopened in October 2012 after earthquake strengthening work was undertaken. As at October 2012, demolition of QEII (a major metropolitan aquatic and athletic facility) was nearly complete. A PoolzinSchool 'learn to swim' pool is operating from Queenspark School until Term 1 of 2013. The Council has supported the rebuild of an eastern aquatic facility, with community consultation to take place early in 2013.

Many streets in Wainoni and Aranui, including Bickerton Street, Shortland Street and Breezes Road, were affected by liquefaction from the earthquakes. Significant road works and wastewater pipe repairs have occurred, improving roading; however, potholes continue to create drops and uneven surfaces. The Stronger Christchurch Infrastructure Rebuild Team (SCIRT) co-ordinates the rebuilding of infrastructure within a given section of works to reduce piecemeal disruptions and increase efficiency, connecting with other service providers where possible. Wainoni Road has a number of large holes continually sinking and creating unsafe road conditions. Roads are fixed last in the infrastructure rebuild programme, as services tend to run under the road system. As at October 2012 SCIRT has five work notices in progress in the area, including three wastewater projects, one storm water project and a geotechnical investigation.

As at October 2012 the only bus route that identifies Aranui is the Avondale and Aranui link, which is a van service that runs from Eastgate shopping centre to Wainoni Park in Aranui, then on to The Palms shopping centre at Shirley. This operates to and from the malls four times a day on a weekly basis (but no Sunday service).

Demand for housing in the eastern suburbs has increased as many people with red-zoned properties do not want to leave the area. Some red-zoned properties have experienced increased graffiti, vandalism, arson and burglaries. With there being many different owners the responsibility for maintaining empty sections is spread and some properties may pose a fire risk in summer. Areas where repairs have been undertaken have seen rental prices increased due to improvements in the houses, and lower income options have been reduced. Housing New Zealand and Community Group Housing properties sustained varying damage to a high number of properties during the September 2010 and February 2011 earthquakes. Around 90 Housing New Zealand houses are still out of commission. These are boarded up and add to a feeling of desolation in the area. In the Wainoni area by Porritt Park 275 houses have been red-zoned.

## Economic environment

Following on from the 2010 and 2011 earthquakes several shops at the intersection of Breezes Road and Pages Road had significant damage, with some being demolished. The Mobil Service station has reopened and the Hampshire Street shops and Wainoni Road shops are open and trading. The Vancouver Crescent shops were demolished, while the Wainoni Pak'n'Save has continued to trade with minimal disruption. Whilst overall the range of type of shops has not decreased, the number of shops has, and this loss of numbers combined with a reduction in the population of the area has resulted in a reduction in income for the area. There are still some businesses struggling, but the majority of these have already closed and those that were demolished have made arrangements to re-establish where they have been able to do so. Increased financial pressure is being experienced by a greater number of families who, as a result of the loss of businesses, jobs or a reduction in income, now find themselves having to budget on less income; as a result of this, demand for budgeting services and income supports such as food parcels has increased.

## Natural environment

There was significant lateral spreading and liquefaction in Porritt Park and liquefaction in Wainoni Park (Hampshire Street) as a result of the 2010 and 2011 earthquakes. Flooding risks from the Avon River at the northern end of the suburb were minimised with extensive stop-bank work which was undertaken along the Avon River corridor. Wainoni Park rugby league grounds were significantly damaged and were unable to be fully used until October 2012. Initially, coastline/beaches and the Avon River could not be used due to raw sewage being pumped into the sea, but these are now open again. The area itself is predominantly technical category three (TC3) and TC2, which means that in future significant earthquakes, minor to significant land damage from liquefaction is possible.

The Avon Otakaro group was formed in 2011 and comprises individuals and organisations which have a vision document widely supported by local community. Essentially, the vision is to build a 'beautiful park and reserve in the Christchurch red zone around the Avon River'.

## Future risks / opportunities

Risk / opportunity	Progress to date / outcomes
Depopulation of the area has reduced housing and decreased value in green-zoned housing. Boarded-up properties may be left unkempt, raising security concerns.	Demand for housing in the east is high due to a lack of available housing; rental prices have also increased, limiting lower income options. Properties not maintained may pose a fire risk in summer.
Roading and access difficulties and declining public transport services.	Road and wastewater repairs are on-going. The area has a greatly reduced bus service, consisting of a van that operates four times a day on a weekly basis (but not on Sundays).
Impact on school enrolments and viability, loss of educational infrastructure.	The Ministry of Education's Education Renewal Recovery Plan, presented in late 2012, proposes the building of a New Year 1-13 school to replace five schools in the area.
Future land damage, flooding and loss of natural environment.	The area is mainly TC3 and TC2; meaning that in future earthquakes minor to significant land damage from liquefaction is possible.
Loss of major recreational infrastructure and other amenities.	The area lost the use of two community facilities; a community group is looking at options for a new facility. A new library opened in September 2012. Cowles Stadium reopened in October 2012. QEII (a major metropolitan facility) is being demolished. A PoolzinSchool "learn to swim" pool is operating from Queenspark School until Term 1 of 2013. The Council has supported the rebuild of an eastern aquatic facility, with consultation to take place early in 2013.
Financial ruin or reduced income for business and families due to delays and indecision and reduced access to services.	Some businesses are still struggling and more financial pressure is being experienced by families budgeting on a reduced income and accessing support services for the first time.
Increased social isolation, volunteer and community burnout and increasing health issues.	Organisations are reporting many individuals are 'hitting the wall' in regard to their resilience levels. Many groups have depleted resources and are dealing with community and personal issues. Frustration levels and health issues are increasing. A practitioners' group of agencies supporting communities and organisations in the east (the Network for Eastside Community Support) has been established to consider what, where and how they can help and share, knowledge and resources.
Increased opportunity to develop and improve the natural environment, for example, riverbanks.	The focus is currently risk management rather than beautification. The Avon Otakaro group has formed to build a 'beautiful park and reserve in the Christchurch red zone around the Avon River'.
Opportunity for cohesive development and collaboration in re-establishing infrastructure.	SCIRT co-ordinates the rebuilding of infrastructure, connecting with other service providers where possible.
Increased funding for groups.	Anecdotally, many groups are struggling and have been unable to access earthquake funds for regular services which are under pressure due to earthquake issues.
Maintaining and developing community connectedness and new initiatives. There is an opportunity for the co-ordinated development of the community as a collective, rather than by natural, longer-term growth and development.	Sport Canterbury appointed an Active Schools co-ordinator in 2011. Membership has increased in the Aranui Eagles league club with seven new teams. A summer children's touch rugby programme for over 100 children was launched in October 2012 children. The Aranui Community Hub continues to meet fortnightly.
Preparedness for future disasters/development of resilience projects.	The Aranui Community Hub has a steering group which has employed a response planner to assist in developing a preparedness plan for wider Aranui.